



agaram.lk

OL/2015/43-E-I

- Identify the painting given here and write five sensible sentences on given subtitles evaluating its art qualities, under question numbers 36 to 40.



36. Place and period :

agaram.lk

37. Theme :

38. Composition :

39. Colour usage :

40. Expression of feelings :

* * *

Agaram.LK - Keep your dreams alive!

Agaram.LK - Keep your dreams alive!

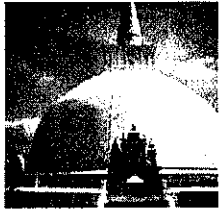
OL/2015/43-E-I

- Give short answers to questions 6 to 10.
6. Name the artist who created the famous cartoon character 'magodisthuma'.
.....
7. What method is adopted to decorate the walls of mosques, where extracts from Kuran are artistically employed?
.....
8. What hand gesture (mudra) is used by sculptors when depicting the attainment of Buddhahood of Siddhartha Gothama?
.....
9. What is the Jathaka story often employed by Kandyan artists to depict the value of 'Dāna Pāramitha'?
.....
10. What is the well known place in Colombo town where many paintings of dignified Sri Lankan artists are on show?
.....
- Select the most suitable answer to each of the questions 11 to 15 and underline it.
11. This person who has shown his talents in batik art and in making illustrations, was an officer in art education. Name this person.
(1) W.J.G. Beling (2) Stanley Abeysinghe
(3) Sumana Dissanayake (4) A.C.G.S. Amarasekara
12. The image house named as 'Uttaramaya' which belongs to Alahana pirivena of Polonnaruwa
(1) has been built in Sri Lanka under Mahayana influence.
(2) has been built in Sri Lanka influenced by Dravidian art works of India.
(3) has been built under Dravidian regime.
(4) has been built using a rock during the reign of Nissanka Malla.
13. The medallion with a figure of a bull with a hump found in Indus Valley
(1) portrays a Brahmin God.
(2) proves that Indus valley people were engaged in worshipping animal figures.
(3) depicts the bull, 'nandi'; the vehicle of God Shiva.
(4) reveals that bull had been a sacred animal.
14. The 'sphinx' sculpture situated near pyramids in Egypt
(1) symbolizes the security of the pyramid.
(2) embodies the power, majesty and grandeur of the Pharaohs.
(3) portrays that the Pharaohs were strong as lions.
(4) symbolizes the ruling power of Egyptian rulers.
15. Raphael Santi
(1) was a person who preferred paintings social incidents rejecting religious events.
(2) was an artist fond of painting only Madonnas.
(3) was the superb artist who had the ability in depicting human figure, among the artists of renaissance period.
(4) was a person clever in portraying tenderness of infants and the picturesque representation of human figure.

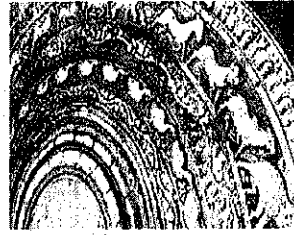
[see page three

- Select from **A, B, C, D** and **E**, the pictures that show a direct connection to the pictures given from **16** to **20** and write its number on the dotted line.

16.

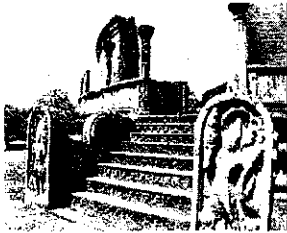


(.....)

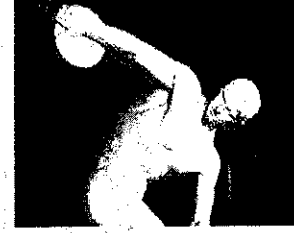


A

17.

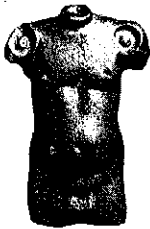


(.....)

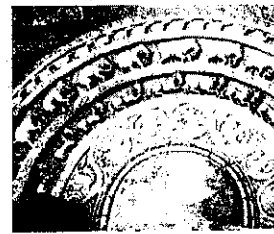


B

18.



(.....)

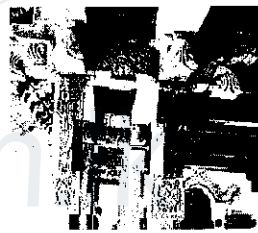


C

19.



(.....)

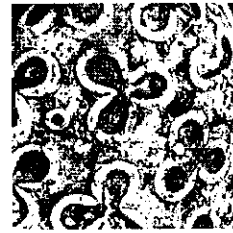


D

20.



(.....)



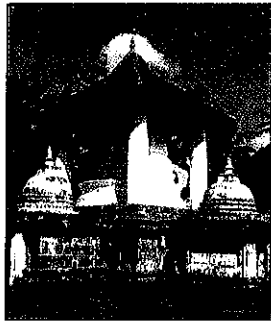
E

- Complete the given sentences **21** to **25** by filling the blanks with suitable words.

- The decorative motif designed in the shape of a pot, using different poses of several female figures by traditional artists, is known as
- Out of the initial period paintings of Thiwanka image house, the painting named as depicts an incident connected to Lord Buddha's life.
- The act of trampling a dwarf figure by the right foot of Nataraj figure symbolizes
- Carving at the end of the carving 'Great Renunciation', in Sanchi gateway symbolizes prince Siddhartha's ordination.
- The European abstract artist who added abstract shapes to sculpture, instead of visual realism was

[see page four

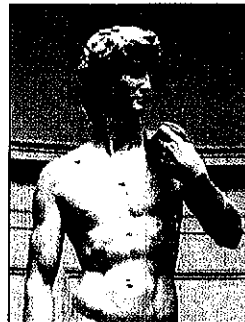
- Referring to pictures **F, G, H, I** and **J**, answer questions **26** to **30**.



F



G



H



I



J

26. What is the name given to the construction in picture **F**, which is to be seen at Gadaladeniya temple premises?
.....
27. During which period of art the figure of Bodhisathwa in picture **G**, which is to be seen at Ajantha, was painted?
.....
28. By whom is this figure depicting youthfulness seen in picture **H** is carved?
.....
29. What name is used for the construction shown in picture **I**, which is to be seen at 'Daladamaluwa' in Polonnaruwa?
.....
30. Whom is depicted in the picture marked by letter **J**?
.....

- Write a complete sentence to give the meaning of each word marked by numbers **31** to **35**.

31. Horizontal architraves :
(Udalipath)
32. Terra-cotta :
33. Gajasinghe :
34. Amarna :
35. Gopuram :

[see page five

OL/2015/43-E-II

සියලු ම හිමිකම් ඇවිරිණි / முழுப் பதிப்புரிமையுடையது / All Rights Reserved]

ශ්‍රී ලංකා විභාග දෙපාර්තමේන්තුව ශ්‍රී ලංකා විභාග දෙපාර්තමේන්තුව ශ්‍රී ලංකා විභාග දෙපාර්තමේන්තුව ශ්‍රී ලංකා විභාග දෙපාර්තමේන්තුව ශ්‍රී ලංකා විභාග දෙපාර්තමේන්තුව
 இலங்கைப் பரீட்சைத் திணைக்களம் இலங்கைப் பரීட்சைத் திணைக்களம் இலங்கைப் பரීட்சைத் திணைக்களம் இலங்கைப் பரීட்சைத் திணைக்களம் இலங்கைப் பரීட்சைத் திணைக்களம்
 Department of Examinations, Sri Lanka Department of Examinations, Sri Lanka Department of Examinations, Sri Lanka Department of Examinations, Sri Lanka Department of Examinations, Sri Lanka
 ශ්‍රී ලංකා විභාග දෙපාර්තමේන්තුව ශ්‍රී ලංකා විභාග දෙපාර්තමේන්තුව ශ්‍රී ලංකා විභාග දෙපාර්තමේන්තුව ශ්‍රී ලංකා විභාග දෙපාර්තමේන්තුව ශ්‍රී ලංකා විභාග දෙපාර්තමේන්තුව
 இலங்கைப் பரීட்சைத் திணைக்களம் இலங்கைப் பரීட்சைத் திணைக்களம் இலங்கைப் பரීட்சைத் திணைக்களம் இலங்கைப் பரīட்சைத் திணைக்களம் இலங்கைப் பரīட்சைத் திணைக்களம்
 Department of Examinations, Sri Lanka Department of Examinations, Sri Lanka Department of Examinations, Sri Lanka Department of Examinations, Sri Lanka Department of Examinations, Sri Lanka

43 E II

අධ්‍යයන පොදු සහතික පත්‍ර (සාමාන්‍ය පෙළ) විභාගය, 2015 දෙසැම්බර්
 கல்விப் பொதுத் தராதரப் பத்திர (சாதாரண தர)ப் பரீட்சை, 2015 டிசெம்பர்
 General Certificate of Education (Ord. Level) Examination, December 2015

| | |
|-----------|----|
| විඳු | II |
| சித்திரம் | II |
| Art | II |

පැය දෙකයි
 இரண்டு மணித்தியாலம்
 Two hours

Important:

- * Write your **Index number** clearly on the line given on the **reverse** of the answer script.
- * Ensure that your drawing is quite dry before you hand it over to the Supervisor. Wet drawings will stick to each other and it will be disadvantageous to you.
- * Water colour, poster colour, tempera, pastel or any colour medium that is not greasy and does not stick may be used. (It is advisable not to use felt-pens.)
- * All objects should be kept below the eye level. In case they are not arranged properly the candidates may remind the Supervisor about it before the exam begins.

Free Line Drawing and Pictorial Composition in colour

- * Observe the objects in front of you.
 1. First do your preliminary sketch using the rough paper given to you.
 2. Draw and colour the objects as you see. Use the white drawing paper for this.
- * **Tie two drawings together and hand over to the supervisor.**
- * Please note that the following points will be considered when assessing your work.
 - Study in free line
 1. Your skill in handling the relevant media in your preliminary sketch on the rough paper.
 - Colour Drawing
 2. The objects should be composed artistically to suit the plane.
 3. Your understanding of scales of measure, perspectives and three-dimensional effects.
 4. Treatment of textural effects and showing characteristics of the given objects.
 5. Your skill in handling the colour medium.
 6. Suggestion of a suitable background and overall finishing.

N.B.

You are not expected to draw the board very large. You are free to adjust its measurements to suit the composition.

* * *



agaram.lk

OL/2015/43-E-III

සියලු ම හිමිකම් ඇවිරිණි / முழுப் பதிப்புரிமையுடையது / All Rights Reserved

ශ්‍රී ලංකා විභාග දෙපාර්තමේන්තුව ශ්‍රී ලංකා විභාග දෙපාර්තමේන්තුව ශ්‍රී ලංකා විභාග දෙපාර්තමේන්තුව ශ්‍රී ලංකා විභාග දෙපාර්තමේන්තුව ශ්‍රී ලංකා විභාග දෙපාර්තමේන්තුව
 இலங்கைப் பரீட்சைத் திணைக்களம் இலங்கைப் பரීட்சைத் திணைக்களம் இலங்கைப் பரීட்சைத் திணைக்களம் இலங்கைப் பரීட்சைத் திணைக்களம் இலங்கைப் பரීட்சைத் திணைக்களம்
 Department of Examinations, Sri Lanka Department of Examinations, Sri Lanka Department of Examinations, Sri Lanka Department of Examinations, Sri Lanka Department of Examinations, Sri Lanka
 ශ්‍රී ලංකා විභාග දෙපාර්තමේන්තුව ශ්‍රී ලංකා විභාග දෙපාර්තමේන්තුව ශ්‍රී ලංකා විභාග දෙපාර්තමේන්තුව ශ්‍රී ලංකා විභාග දෙපාර්තමේන්තුව ශ්‍රී ලංකා විභාග දෙපාර්තමේන්තුව
 இலங்கைப் பரීட்சைத் திணைக்களம் இலங்கைப் பரීட்சைத் திணைக்களம் இலங்கைப் பரීட்சைத் திணைக்களம் இலங்கைப் பரීட்சைத் திணைக்களம் இலங்கைப் பரීட்சைத் திணைக்களம்
 Department of Examinations, Sri Lanka Department of Examinations, Sri Lanka Department of Examinations, Sri Lanka Department of Examinations, Sri Lanka Department of Examinations, Sri Lanka

43 E III

අධ්‍යයන පොදු සහතික පත්‍ර (සාමාන්‍ය පෙළ) විභාගය, 2015 දෙසැම්බර්
 கல்விய் பொதுத் தராதரப் பத்திர (சாதாரண தர)ப் பரீட்சை, 2015 டிசெம்பர்
 General Certificate of Education (Ord. Level) Examination, December 2015

විනු III
 சித்திரம் III
 Art III

පැය දෙකයි
 இரண்டு மணித்தியாலம்
 Two hours

Important:

- * You must draw only one drawing.
- * Write your **index number** and **question number** clearly on the line given on the **reverse** of the answer script.
- * Be sure that your drawing is completely dry before it is handed over to the Supervisor. Wet drawings may stick together and it will be disadvantageous to you.
- * Use any of the following media.
 Water colour, poster paint, pastel or any other colour medium that is not greasy and does not stick.
 (It is advisable not to use felt-pens.)
- * Drawing papers and tissue papers (for those who need it) will be provided.

Select one from either Part A or Part B or Part C

Part A - Pictorial Composition

1. A memorable occasion in Kandy Tooth Relic procession or Ther Thiruvizha.
2. A tea boutique in the village or a tea kiosk by the pavement.
3. Wild elephants rushing into a village.
4. A fishing boat caught in fierce sea waves.

Part B - Design

5. Make a design for an oval brass tray using traditional art motifs.
6. Design a repeat pattern 9" × 9" in size suitable for printing a cloth material (cheetha) using animal shapes.
7. Design a border pattern for a 'sarong', using an eight petalled-flower. The design should be able to paint in 'Batik technique'.

Part C - Graphic Art

8. Design an attractive invitation card for a literary festival of your area.
9. Design a wrapper for a cake of soap 1×2×3 inches in size. Give a suitable name for it.
10. Design a colourful poster to suit the theme, 'Safeguard National Heritage'.

* * *



agaram.lk