

AL/2018/28/E-I

සියලු ම හිමිකම් ඇවිරිණි / முழுப் பதிப்புரிமையுடையது / All Rights Reserved

ශ්‍රී ලංකා විභාග දෙපාර්තමේන්තුව ශ්‍රී ලංකා විභාග දෙපාර්තමේන්තුව ශ්‍රී ලංකා විභාග දෙපාර්තමේන්තුව ශ්‍රී ලංකා විභාග දෙපාර්තමේන්තුව ශ්‍රී ලංකා විභාග දෙපාර්තමේන්තුව  
 இலங்கைப் பரீட்சைத் திணைக்களம் இலங்கைப் பரීட்சைத் திணைக்களம் இலங்கைப் பரීட்சைத் திணைக்களம் இலங்கைப் பரීட்சைத் திணைக்களம் இலங்கைப் பரීட்சைத் திணைக்களம்  
 Department of Examinations, Sri Lanka Department of Examinations, Sri Lanka Department of Examinations, Sri Lanka Department of Examinations, Sri Lanka Department of Examinations, Sri Lanka  
 ශ්‍රී ලංකා විභාග දෙපාර්තමේන්තුව ශ්‍රී ලංකා විභාග දෙපාර්තමේන්තුව ශ්‍රී ලංකා විභාග දෙපාර්තමේන්තුව ශ්‍රී ලංකා විභාග දෙපාර්තමේන්තුව ශ්‍රී ලංකා විභාග දෙපාර්තමේන්තුව  
 இலங்கைப் பரීட்சைத் திணைக்களம் இலங்கைப் பரීட்சைத் திணைக்களம் இலங்கைப் பரීட்சைத் திணைக்களம் இலங்கைப் பரීட்சைத் திணைக்களம் இலங்கைப் பரීட்சைத் திணைக்களம்  
 Department of Examinations, Sri Lanka Department of Examinations, Sri Lanka Department of Examinations, Sri Lanka Department of Examinations, Sri Lanka Department of Examinations, Sri Lanka

අධ්‍යයන පොදු සහතික පත්‍ර (උසස් පෙළ) විභාගය, 2018 අගෝස්තු  
 கல்விப் பொதுத் தராதரப் பத்திர (உயர் தர)ப் பரீட்சை, 2018 ඔகස්තු  
 General Certificate of Education (Adv. Level) Examination, August 2018

21.08.2018 / 08 30 - 10 30

ගෞරවය විද්‍යාව I  
 மனைப் பொருளியல் I  
 Home Economics I

28 E I

පැය දෙකයි  
 இரண்டு மணித்தியாலம்  
 Two hours

**Instructions:**

- \* Answer **all** the questions.
- \* Write your **Index Number** in the space provided in the answer sheet.
- \* Use of calculators is **not** allowed.
- \* Read the instructions given on the back of the answer sheet carefully.
- \* In each of the questions **1** to **50**, pick one of the alternatives from (1), (2), (3), (4), (5) which is **correct** or **most appropriate** and mark your response on the answer sheet with a **cross** (×) in accordance with the instructions given on the back of the answer sheet.

1. Different feelings are depicted by colours. Two feelings depicted by red colour are

- (1) warmth and activeness. (2) receding nature and warmth.  
 (3) advancing nature and smallness. (4) activeness and heaviness.  
 (5) receding nature and smallness.

2. The colours used in a room are given below.

Ceiling - white Curtains - purple and light brown  
 Walls - light green Upholstery - light purple  
 Floor - white Flower arrangement - dark green and orange

The colour scheme used in this room is an/a

- (1) adjacent colour scheme. (2) complementary colour scheme.  
 (3) split complementary colour scheme. (4) double complementary colour scheme.  
 (5) triad colour scheme.

3. Two features seen in a house are as follows.

- Stairway
- Paved with square shaped tiles

The two ways of showing rhythm from these two features are respectively

- (1) repetition and opposition. (2) opposition and transition.  
 (3) transition and opposition. (4) opposition and repetition.  
 (5) repetition and transition.

4. Select the option that includes only the community resources.

- (1) post office, lands and houses (2) railway station, library and play ground  
 (3) lands, cinema hall and post office (4) library, buildings and houses  
 (5) play ground, railway station and buildings

5. From the following what is the **incorrect** statement regarding the water bill?

- (1) The first 15 units are provided at a concession rate.  
 (2) In water consumption, the amount payable is decided on the number of units expended.  
 (3) The payment per unit of water changes according to the special service requirements.  
 (4) A fixed monthly rate is payable for every bill.  
 (5) 100 litres of water is considered as a unit in a water bill.

[See page two]

6. The device that connects or breaks off the current to the household circuit from the main supply is the  
 (1) trip switch. (2) fuse. (3) main switch.  
 (4) meter. (5) multi circuit breaker.
7. The power of an electric kettle is 750 W. By using this for half an hour, the amount of electric energy consumed in kilo watt hours is  
 (1) 0.375. (2) 0.650. (3) 0.750. (4) 1.500. (5) 1.650.
8. A carbohydrate having the molecular formula  $C_{12}H_{22}O_{11}$  is  
 (1) Amylose. (2) Cellulose. (3) Glucose. (4) Galactose. (5) Maltose.
9. What are the reagents that are needed for a chemical test to identify sucrose?  
 (1) Iodine and dilute sulphuric acid  
 (2) Iodine and potassium hydroxide  
 (3) Dilute sulphuric acid and Fehling's A and B solutions  
 (4) Potassium hydroxide and Fehling's A and B solutions  
 (5) Concentrated nitric acid and iodine
10. A function of water soluble fibre in the body is  
 (1) enhancing peristalsis. (2) hindering the absorption of cholesterol.  
 (3) increasing the faecal bulk. (4) providing a medium for the intestinal microbes.  
 (5) preventing constipation.
11. Two essential amino acids from the following are  
 (1) Valine and Cystine. (2) Methionine and Lysine. (3) Cysteine and Threonine.  
 (4) Tyrosine and Leucine. (5) Glycine and Isoleucine.
12. Two conjugated proteins are  
 (1) haemoglobin and lipoprotein. (2) phosphoprotein and polypeptide.  
 (3) lipoprotein and dipeptide. (4) haemoglobin and polypeptide.  
 (5) phosphoprotein and dipeptide.
13. Omega-6 fatty acids are  
 (1) Linolenic acid and Arachidonic acid. (2) Arachidonic acid and Oleic acid.  
 (3) Linolenic acid and Linoleic acid. (4) Oleic acid and Linoleic acid.  
 (5) Linoleic acid and Arachidonic acid.
14. Two antioxidants are  
 (1) magnesium and vitamin C. (2) selenium and vitamin D.  
 (3) magnesium and vitamin A. (4) selenium and vitamin E.  
 (5) vitamin E and vitamin D.
15. A symptom of iodine deficiency is  
 (1) discolouration of hair. (2) delayed blood clotting. (3) cheilosis.  
 (4) retarded growth. (5) faintishness.
16. Following are some facts connected to micro nutrients needed for the body.  
 • Acid base balance • Blood pressure  
 • Vomiting and diarrhoea • Cramps  
 Two micro nutrients responsible for the above facts are  
 (1) magnesium and zinc. (2) iron and calcium. (3) sodium and potassium.  
 (4) copper and sodium. (5) magnesium and potassium.
17. Anaemia is **not** caused by the deficiency of  
 (1) folic acid. (2) vitamin C. (3) vitamin B<sub>12</sub>. (4) copper. (5) phosphorus.
18. A vitamin included in the B group vitamins is  
 (1) Inositol. (2) Retinol. (3) Tocopherol. (4) Cholecalciferol. (5) Naphthaquinone.

[See page three

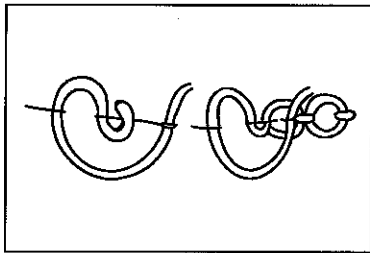
19. Which of the following vitamin deficiency shows the conditions Xerophthalmia and Keratomalacia?  
 (1) Vitamin A (2) Vitamin B<sub>1</sub> (3) Vitamin B<sub>2</sub> (4) Vitamin C (5) Vitamin D
20. Select the correct statement regarding the protein requirement according to the table of Recommended Dietary Allowances (2007).  
 (1) The requirement is not changed during childhood.  
 (2) During adolescence, the requirement is more for males than for females.  
 (3) The requirement is same for both the genders in adulthood.  
 (4) The requirement during the second and third trimesters of pregnancy are equal.  
 (5) The requirement gradually increases during the 1<sup>st</sup> year of lactation.
21. The food items which contain the proteins gluten, collagen and ovovitalin respectively are  
 (1) rice, meat and liver. (2) wheat, fish and milk. (3) rice, meat and egg.  
 (4) wheat, fish and egg. (5) corn, liver and milk.
22. The food item rich in vitamin C and pectin in its composition is  
 (1) green gram. (2) beans. (3) woodapple. (4) watermelon. (5) cabbage.
23. Which one is the most suitable oil for deep frying?  
 (1) Olive oil (2) Soya oil (3) Vegetable oil (4) Sunflower oil (5) Coconut oil
24. Two carbohydrate digestive enzymes in the intestinal juice are  
 (1) peptidase and lactase. (2) maltase and lipase. (3) sucrase and lipase.  
 (4) peptidase and maltase (5) sucrase and lactase.
25. Select the correct statement regarding the absorption of nutrients.  
 (1) Mostly the vitamins are absorbed in the latter part of the small intestine.  
 (2) Acidity in the diet accelerates the calcium absorption.  
 (3) The hormone insulin hinders iron absorption.  
 (4) A high percentage of water in the diet is absorbed in the large intestine.  
 (5) In the villi, the fat soluble vitamins are absorbed into the blood stream.
26. Select the correct statement regarding the metabolism of nutrients.  
 (1) Energy, water and oxygen are produced in the kreb cycle.  
 (2) Ketone bodies are synthesised in the protein metabolism.  
 (3) Pyruvic acid is formed at the end of glycolysis.  
 (4) Fat metabolism yields urea.  
 (5) In protein metabolism, deamination occurs in the kidneys.
27. A species of bacteria that causes food poisoning is  
 (1) *Helicobacter pylora*. (2) *Lactobacillus acidophillus*.  
 (3) *Streptococcus lactis*. (4) *Clostridium botulinum*.  
 (5) *Acetobacter aceti*.
28. For which of the following foods sodium benzoate is used as the preservative?  
 (1) Marshmellow (2) Dried bitter gourd (3) Pumpkin preserve  
 (4) Pineapple jam (5) Lime pickle
29. Following are some statements regarding food preservation.  
 A - Dehydration occurs in drying Jak.  
 B - The preservative sugar, is an organic compound.  
 C - pH value of the mixture decreases in making toffee.  
 D - The concentration of the mixture increases in the preparation of jam.  
 The correct statements from these are,  
 (1) A and B. (2) B and C. (3) B and D. (4) A, B and C. (5) A, B and D.

30. Which of the following foods yields ethyl alcohol during its preparation?  
 (1) Pancake (2) Eclairs (3) Buns (4) Patties (5) Butter cake
31. Two examples of rigid and semi rigid food packaging materials are respectively,  
 (1) cardboard and aluminium foil. (2) metal and aluminium foil.  
 (3) glass and thick plastic. (4) thick plastic and metal.  
 (5) cardboard and glass.
32. Which is the food that needs the bacterium *Lactobacillus bulgaricus* in its preparation?  
 (1) Yoghurt (2) Cheese (3) Curd (4) Ghee (5) Butter
33. What is the **incorrect** statement regarding stewing?  
 (1) More time needed for cooking.  
 (2) Loss of nutrients being more.  
 (3) Several food items could be mixed in cooking.  
 (4) Cooking should be done with the lid closed.  
 (5) The use of corn flour for thickening.
34. After baking a cake, it was noticed that the middle is sunken. The cause for this could be  
 (1) the addition of less leavening agents.  
 (2) the addition of more eggs.  
 (3) improper mixing of the ingredients.  
 (4) frequent opening of the oven.  
 (5) the high temperature in the oven.
35. In an adolescent girl, the female sex hormones are synthesised in the  
 (1) pituitary gland. (2) adrenal glands. (3) ovaries.  
 (4) uterus. (5) fallopian tubes.
36. The duration of the pregnancy period is normally  
 (1) 250 days. (2) 260 days. (3) 270 days. (4) 280 days. (5) 300 days.
37. From the following which is the **incorrect** statement regarding the pregnancy period?  
 (1) Nausea and vomiting may occur.  
 (2) The onset of synthesis of breast milk.  
 (3) Oedema of the feet may be visible.  
 (4) Diabetes is a risk factor.  
 (5) Shows the highest weight gain during the second trimester.
38. The two stages in the life cycle where a rapid physical and motor development is seen are  
 (1) infancy and early childhood.  
 (2) early childhood and late childhood.  
 (3) late childhood and adolescence.  
 (4) infancy and adolescence.  
 (5) early childhood and adolescence.
39. According to the National Immunization Programme (2007), the 4<sup>th</sup> dose of the Pentavalent vaccine is given to a child after the completion of  
 (1) 6 months. (2) 9 months. (3) 12 months. (4) 18 months. (5) 3 years.
40. A feature seen in a child of late childhood is  
 (1) liking to be in cliques. (2) concept formation being maximum.  
 (3) engaging in problem solving. (4) showing emotions intensely.  
 (5) day dreaming.

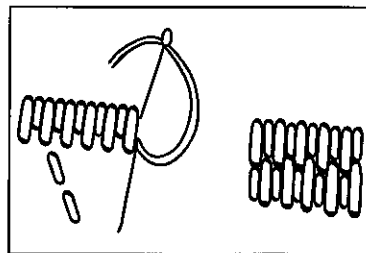
[See page five]

41. From the following, what disease is prevented by the vaccine given to a child of late childhood?  
 (1) Mumps. (2) Measles. (3) Polio. (4) Rubella. (5) Whooping cough.
42. From the following, what is the behaviour that needs counselling during adolescence?  
 (1) Likes to be prominent  
 (2) Shows aggressive behaviour  
 (3) Tries to take decisions independently  
 (4) Argues with parents  
 (5) Dislikes adult intervention

43.



A



B

The above diagrams *A* and *B* show respectively

- (1) Long and short stitch and cable stitch.  
 (2) German knot stitch and Roumanian stitch.  
 (3) Roumanian stitch and long and short stitch.  
 (4) German knot stitch and cable stitch.  
 (5) Cable stitch and long and short stitch.

44. From the following, what is the correct statement?

- (1) In preparation, the fabric is soaked in water, squeezed thoroughly and dried.  
 (2) Dilute acids do not damage wool fibres.  
 (3) Fabrics woven by twill weave are low in strength.  
 (4) In embroidering, a good finish could be obtained by transferring the motifs on to the fabric.  
 (5) Silk fabrics could be cleaned by soaking in boiling water.

45. Following are some properties of fibres used in fabric manufacture.

- A* - could be weighted.  
*B* - melts when held to the flame.  
*C* - elasticity is more.  
*D* - could trap air within the fibres.  
*E* - not damaged by alkalis in washing reagents.

From these, the properties of nylon fibres are

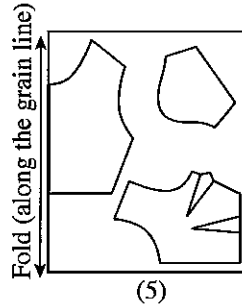
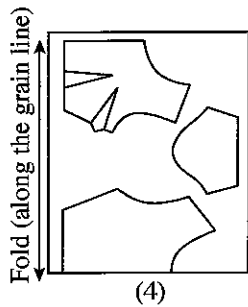
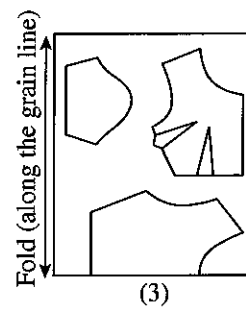
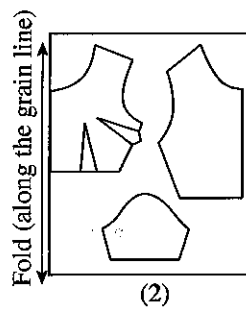
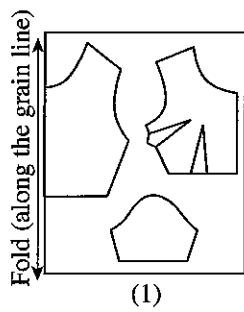
- (1) *A*, *B* and *C*. (2) *A*, *D* and *E*. (3) *B*, *C* and *D*.  
 (4) *B*, *C* and *E*. (5) *C*, *D* and *E*.

46. The stitches used in finishing the cut edges and barred ends of a buttonhole respectively are,

- (1) Cross stitch and Herringbone stitch.  
 (2) Blanket stitch and Buttonhole stitch.  
 (3) Herringbone stitch and Cross stitch.  
 (4) Buttonhole stitch and Blanket stitch.  
 (5) Herringbone stitch and Blanket stitch.

[See page six

47. From the diagrams given below, which is the correct layout of the parts of the saree blouse block for cutting?



48. Following are some statements quoted from a note written by a student.

- A - Wheel lines are identified as a kind of markings that should be kept on the basic block.
- B - Chalk and powder are used as absorbents in removing stains.
- C - In calculating the bust measurement for the drafting of the basic bodice block, 5 centimetres should be added as the ease allowance.
- D - The structure of cotton fibres change when soaked in 12% caustic soda solution.
- E - In finishing the curved edge of a table cloth, a straight band should be attached and turned completely to the wrong side and sewn.

The correct statements are

- (1) A, B and D.
- (2) A, C and E.
- (3) B, C and D.
- (4) B, D and E.
- (5) C, D and E.

49. Following are some statements written by a student regarding Textile Technology. From them which is the **incorrect** statement?

- (1) Trimmings are used to decorate the edges of household linen.
- (2) Fabrics labelled as 'sanforized' will not shrink more than 1% in washing.
- (3) The TFM percentage is low in washing soap.
- (4) The reagents used in removing dirt particles gathered on fabrics are termed as surface active agents.
- (5) In cleaning it is suitable to soak household linen for a longer time in soapy water.

50. What is the correct statement regarding stiffening of fabrics?

- (1) Whitens fabrics and increases absorbability.
- (2) Gives strength and sheen.
- (3) Removes all the stains in the fabrics.
- (4) Act as a coating on fibres and decreases static electricity.
- (5) Suitable for any fabric.

\* \* \*

ශ්‍රී ලංකා විභාග දෙපාර්තමේන්තුව ශ්‍රී ලංකා විභාග දෙපාර්තමේන්තුව ශ්‍රී ලංකා විභාග දෙපාර්තමේන්තුව ශ්‍රී ලංකා විභාග දෙපාර්තමේන්තුව ශ්‍රී ලංකා විභාග දෙපාර්තමේන්තුව  
 இலங்கைப் பரீட்சைத் திணைக்களம் இலங்கைப் பரීட்சைத் திணைக்களம் இலங்கைப் பரීட்சைத் திணைக்களம் இலங்கைப் பரීட்சைத் திணைக்களம் இலங்கைப் பரීட்சைத் திணைக்களம்  
 Department of Examinations, Sri Lanka Department of Examinations, Sri Lanka Department of Examinations, Sri Lanka Department of Examinations, Sri Lanka Department of Examinations, Sri Lanka  
 ශ්‍රී ලංකා විභාග දෙපාර්තමේන්තුව ශ්‍රී ලංකා විභාග දෙපාර්තමේන්තුව ශ්‍රී ලංකා විභාග දෙපාර්තමේන්තුව ශ්‍රී ලංකා විභාග දෙපාර්තමේන්තුව ශ්‍රී ලංකා විභාග දෙපාර්තමේන්තුව  
 இலங்கைப் பரීட்சைத் திணைக்களம் இலங்கைப் பரීட்சைத் திணைக்களம் இலங்கைப் பரීட்சைத் திணைக்களம் இலங்கைப் பரීட்சைத் திணைக்களம் இலங்கைப் பரීட்சைத் திணைக்களம்  
 Department of Examinations, Sri Lanka Department of Examinations, Sri Lanka Department of Examinations, Sri Lanka Department of Examinations, Sri Lanka Department of Examinations, Sri Lanka

අධ්‍යයන පොදු සහතික පත්‍ර (උසස් පෙළ) විභාගය, 2018 අගෝස්තු  
 கல்விப் பொதுத் தராதரப் பத்திர (உயர் தர)ப் பரீட்சை, 2018 ஓகஸ்ட்  
 General Certificate of Education (Adv. Level) Examination, August 2018

ගෘහ ආර්ථික විද්‍යාව II  
 மனைப் பொருளியல் II  
 Home Economics II

28 E II

24.08.2018 / 08 30 - 11 40

පැය තුනයි

மூன்று மணித்தியாலம்  
 Three hours

අමතර කියවීමේ කාලය - මිනිත්තු 10 යි  
 மேலதிக வாசிப்பு நேரம் - 10 நிமிடங்கள்  
 Additional Reading Time - 10 minutes

Use **additional reading time** to go through the question paper, select the questions and decide on the questions that you give priority in answering.

### Instructions:

- \* Answer **three** questions from **Part I** including question No. 1 and answer **four** questions from **Part II** including question No. 5.

### Part I

(Answer **three** questions including question No. 1 and two others.)

- A newly married employed couple who intend to live in the city has selected a two bedroomed house. Even though it is a new experience, they are keen in managing the household resources as well as in decorating the home.
  - Write **four** points considered by them in selecting the house.
  - Give **four** instructions that could be given to them regarding the preparation of the household budget.
  - They own some appliances that work by, converting electrical energy to heat energy and electrical energy to mechanical energy.
    - Name **one** such appliance for each respectively.
    - Mention the measures that could be taken by them to conserve electricity in the household.
  - Cushions are kept on the drawing room suite.
    - Draw a suitable design to decorate the cushion covers using ribbons, lace and sequins of different colours.
    - Show with the colour combination, how these materials are applied in the design.
- Write notes on
    - Felting
    - Tie and dye method
  - Write the sequence of sewing and finishing a men's shirt.
  - Explain the facts affecting the proper fit of a dress when fitted on.
  - Describe the manufacturing process of viscose rayon fibres.
- The home management process consists of four steps. Name them and explain one.
  - Give **five** points that should be considered in planning to build a house.
  - (a) Identify the two factors given below, that are important in home decoration.
    - Naturalness
    - Functionalism
  - Explain how the open verandah of a house could be arranged so as to illustrate one of them mentioned in (iii) (a) above.

[See page two

4. (i) (a) Name the neutral colours.  
 (b) Show with **three** examples, how these colours could be used in home decoration.
- (ii) Explain how a drawing room could be decorated so as to express a smooth texture.
- (iii) Explain
- lining
  - piping
- used in garments.
- (iv) Mention the measures to be taken in sewing so as to get a good finish for the neckline of a saree blouse.

### Part II

(Answer *four* questions including question No. 5 and *three* others.)

5. A family consists of the parents, a daughter in the early childhood and a son in the late childhood. The parents are employed. The daughter who attends an early childhood development centre stays in a day care centre until the parents return. Her meals are also supplied by the centre. A lady relative in the neighbourhood stays with the son during the daytime.
- (i) State **five** points to be considered in planning a lunch for this family for a weekday.
  - (ii) It was revealed by a medical check up done at the early childhood development centre that the daughter is poor in nutritional status. Give **four** features that could be seen in the child regarding the above condition.
  - (iii) Sometimes cordial is prepared at home from fresh fruits for the consumption of the family. State the sequence of preparation of a cordial through a flow chart.
  - (iv) Discuss the steps that could be taken by the parents regarding the language development of the child in the late childhood.
  - (v) Review the role of a day care centre.
6. (i) Mention the points that are important in advising a pregnant mother regarding her daily routine.
- (ii) Explain how 'play house' contributes in the development of children in the early childhood.
  - (iii) 'Isolation' is an abnormal behaviour shown by some children in the late childhood. Give reasons for the same, and propose the steps to be taken to overcome this condition.
  - (iv) Discuss the importance of a democratic environment for the development of adolescents.
7. (i) Mention the points that should be included in the label of a packeted food prepared for marketing.
- (ii) State **five** points to be considered regarding the safety of food.
  - (iii) The quality of foods could be improved by two processes. 'Sprouting' and 'protein supplementation'. Explain how the quality of foods is improved by these processes.
  - (iv) Consumption of short eats has become popular at present. Review the effect of these foods on the nutritional status of the community.
8. (i) Identify the macro nutrients and state **four** functions of **one** of them.
- (ii) A higher value is recommended for the iron requirement of the lactating mothers. Give reasons for the same.
  - (iii) Compare
    - (a) Starch and Glycogen
    - (b) Pasteurization and Sterilization of milk
  - (iv) Explain the complications of Diabetes.

[See page three



9. (i) You have been assigned to give instructions regarding the measurement of Body Mass Index and relevant guidance to the participants of the clinic on 'healthy living and nutrition', which is planned to be held in your school.
- (a) Identify 'Body Mass Index'.
  - (b) There are two conditions where this value is higher than the normal level. State these **two** conditions with the ranges of the values of the Body Mass Index.
  - (c) Explain the advice that should be given to individuals of these categories for a healthy living.
- (ii) Discuss the following.
- (a) There is a relationship between the motor development and physical development of children.
  - (b) Association with the peer group is important for the development of children.

\* \* \*



agaram.lk



agaram.lk