



## Provincial Department of Education North Western Province

## SECOND TERM TEST - 2019

Grade 09

## WESTERN MUSIC

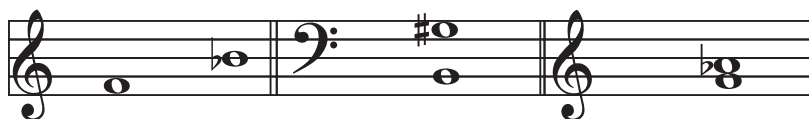
02 hours

Name / Index No. :

- Answer all questions
- Underline the correct answer.

## Part - I

01. Who is the founder of 'programme music' ?  
 (i) Bach (ii) Mozart (iii) Liszt (iv) Bartok
02. What do you mean by a dot below the note in oriental notation ?  
 (i) Higher Octave (ii) Lower Octave (iii) Middle Octave (iv) An Octave
03. 'Mehe Gee' Can be heard at,  
 (i) Kulu Netum (ii) Pancha Keli (iii) Kalagedi Netum (iv) Boating
04. Underline the Light Song  
 (i) ගමේ ගොඩේ සිදාදියේ..... (ii) තැර ඉස්නි තැර..... (iii) වරමානි සුභ වරිතේ..... (iv) දන්තෝ බුදුන්ගේ.....
05. Letter name of this note ?  
 (i) A<sup>b</sup> (ii) M. C<sup>b</sup> (iii) E<sup>b</sup> (iv) C<sup>b</sup>
06. Value name of this note ?  
 (i) quaver (ii) Semi quaver (iii) Minim (iv) Crotchet
07. Who belongs to the 'Romantic period' ?  
 (i) Dominico Scarlatti (ii) Robert Schumann (iii) Bela Bartok (iv) Joseph Haydn
08. Underline the composer of 'Swan lake' ?  
 (i) Tchaikovsky (ii) Stravinsky (iii) Handel (iv) Bach
09. Name these Intervals ?



- (i) Perfect 4<sup>th</sup>, Minor 6<sup>th</sup>, Major 3<sup>rd</sup> (ii) Perfect 4<sup>th</sup>, Major 6<sup>th</sup>, Minor 3<sup>rd</sup>  
 (iii) Perfect 4<sup>th</sup>, Minor 6<sup>th</sup>, Minor 3<sup>rd</sup> (iv) Perfect 4<sup>th</sup>, Major 6<sup>th</sup>, Major 3<sup>rd</sup>

10. Underline the correct statement ?
- (i) all major and minor 3<sup>rd</sup> and 7<sup>th</sup> are 'Imperfect concords'.
  - (ii) all perfect Intervals and the unison are called 'perfect concords'.
  - (iii) all concords may be perfect.
  - (iv) all major and minor 2<sup>nd</sup> and 6<sup>th</sup> are discords.
11. The Harmonic minor scale which is having F<sup>x</sup> as its 7<sup>th</sup> note.
- (i) G<sup>b</sup> minor
  - (ii) G<sup>#</sup> minor
  - (iii) G minor
  - (iv) G major

12. The key - Signature of B<sup>b</sup> minor is,
- (i) B<sup>b</sup> A<sup>b</sup> D<sup>b</sup> E<sup>b</sup> G<sup>b</sup>
  - (ii) B<sup>b</sup> D<sup>b</sup> E<sup>b</sup> G<sup>b</sup> A<sup>b</sup>
  - (iii) B<sup>b</sup> E<sup>b</sup> A<sup>b</sup> D<sup>b</sup> G<sup>b</sup>
  - (iv) B<sup>b</sup> E<sup>b</sup> A<sup>b</sup> G<sup>b</sup> D<sup>b</sup>

13. Select the 'Definite pitch' Instrument ?
- (i) Kettle Drum
  - (ii) Side Drum
  - (iii) Bass Drum
  - (iv) Tenor Drum

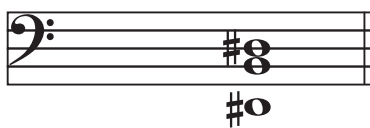
14. The transposition of the Transposing Instrument in the 'String family' ?
- (i) Perfect 5<sup>th</sup> Lower
  - (ii) Perfects 5<sup>th</sup> Higher
  - (iii) Octave Higher
  - (iv) Octave Lower

15. Select the proper answer.



- (i) Major triad in F major
- (ii) Minor triad in F minor
- (iii) Major triad in F minor
- (iv) Minor triad in F major

16. Name this triad ?



- (i) 1<sup>st</sup> Inversion in B major
- (ii) 2<sup>nd</sup> Inversion in B major
- (iii) 1<sup>st</sup> Inversion in B minor
- (iv) 2<sup>nd</sup> Inversion in B minor

17. Which group of notes belong to a bar of  $\frac{6}{8}$  time - Signature ?



18. Select the Compound time - Signature ?

(i)  $\frac{3}{8}$

(ii)  $\frac{2}{4}$

(iii)  $\frac{6}{4}$

(iv)  $\frac{4}{2}$

19. What Italian word is used to Indicate 'fast' ?

(i) Adagio

(ii) Allegro

(iii) Andante

(iv) Forte

20. Select the 'Odd one' ?

(i) Geta Beraya

(ii) Dawula

(iii) Horaneva

(iv) Recorder

(01 x 20 = 40 marks)

- Answer only 3 questions including the first question.

01. Answer the following questions by using the passage given below.

**SUITE VI  
ALLEMANDE**

*Allegro moderato.* J. S. Bach

PIANO. *mf*

(i) Write the name of this piece ?

.....

(ii) Who Composed this piece ?

.....

(iii) Name a contemporary composer of the above period ?

.....

(iv) Which period does this composer belongs ?

.....

(v) Name the key ?

.....

(vi) How many bars are there in this piece ?

.....

(vii) What are the ' Rest ' marks used in this piece ?

.....

(viii) Name the note marked (\*) ?

.....

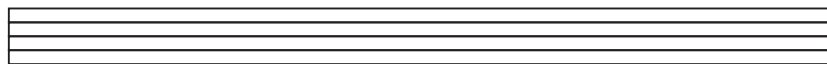
(ix) Write the English meaning for the following.

Cresc - .....

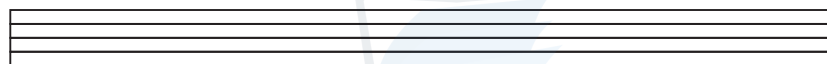
(x) f - ..... (1 x 10 = 10 marks)

02. Write the following scales.

(a) D Harmonic minor Descending with key - signature in minims using F clef.



(b) E<sup>b</sup> Major ascending and Descending with out key - signature, using Treble Clef.



(3 x 2 = 6 marks)

(c) Write the following key - signatures.



B<sup>b</sup> Major

F<sup>#</sup> Minor

F Minor

B<sup>b</sup> Minor

(1 x 4 = 4 marks)

03. Write the following notes.

(a) Name the following ledger line notes.



(i)

(ii)

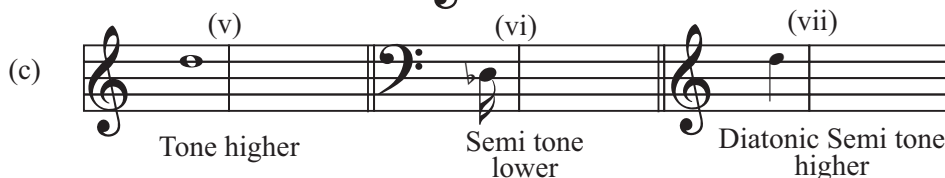
x 2

(b) Write the Enharmonic Equivalents for the following.



(iii)

(iv)



(v)

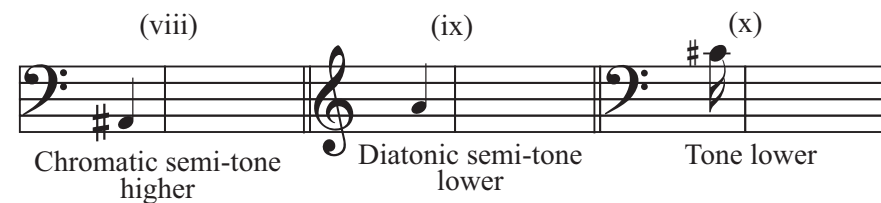
(vi)

(vii)

Tone higher

Semi tone lower

Diatonic Semi tone higher



(viii)

(ix)

(x)

Chromatic semi-tone higher

Diatonic semi-tone lower

Tone lower

(1 x 10 = 10 marks)

04. Transpose this melody into same pitch using Bass - Clef.

(a)

( $\frac{1}{2} \times 10 = 5$  marks)

(b) Insert a Suitable time - Signature.

(i)

(ii)

(iii)

(iv)

(v)

(1 x 5 = 5 marks)

05. Fill this puzzle.

1.		7.		8.		9.			
					2.				
			3.						
			4.						
		5.							
					6.				

**Across :-**

- 1 - The Interval Consists of 4<sup>th</sup>, 5<sup>th</sup> and 8<sup>th</sup>
- 2 - His works were categorized in 'K' numbers.
- 3 - Smallest member of the string family.
- 4 - Every major scale has its own relative scale called.
- 5 - The name for the oval shaped white note
- 6 - The composer of 'Raindrop prelude'.

**Down :-**

- 1 - The Dynamic name for 'soft'.
- 7 - A break in sound is called this.
- 8 - Different letter names for the same note.
- 9 - Technical name for the first degree of the scale.

(1 x 10 = 10 marks)



## Provincial Department of Education North Western Province

**SECOND TERM TEST - 2019**

Grade 09

**WESTERN MUSIC**

Name / Index No. :

**PRACTICAL TEST**

01. Sing any Song given in the syllabus according to grade 09 standard.

- Correct pitch (02 marks)
- Rhythm (02 marks)
- Presentation (02 marks)
- Expression (02 marks)
- Memorizing (02 marks)

10 marks

02. Play the following scales.

G major - Piano

D major - Recorder

10 marks

03. Play a small melody on the key - board or recorder according to grade 09 standard.

10 marks

- Correct notes (02 marks)
- Fluency (02 marks)
- Time (02 marks)
- Presentation (02 marks)
- Expression (02 marks)

04. Clap or tap the given Rhythm patterns.



5 x 2 = 10 marks

05. (a) Sight reading - (Teacher may select)

05 marks

(b) Sight Singing



05 marks



(viii) (ix) (x)

Chromatic semi-tone higher      Diatonic semi-tone lower      Tone lower

(1 x 10 = 10 marks)

04. (i) (a)

(½ x 10 = 05 marks)

(b) Insert a Suitable time - Signature.

(i)

(ii)

(iii)

(iv)

(v)

(1 x 5 = 5 marks)

1	P	E	7	R	F	8	E	C	9	T			
	I		E		N		O						
	A		S		H		N						
	N		T		A		I						
	O				R		C						
					2	M	O	Z	A	R	T		
			3	V	I	O	L	I	N				
			4	M	I	N	O	R					
	5	S	E	M	I	B	R	E	Y	E			
					6	C	H	O	P	I	N		

(1x 10 = 10 marks)