



Provincial Department of Education North Western Province

**SECOND TERM TEST - 2018**

Grade 08

**WESTERN MUSIC**

02 hours

Name / Index No. :

- Underline the most suitable answer.







**Part - I**

01. Which of the following composer was born in 1756 ?  
 (i) F.J. Haydn                      (ii) W.A. Mozart                      (iii) L.V. Beethoven                      (iv) G.F. Handel
02. The bird that is best to imitate human speech ?  
 (i) Shama                      (ii) Koel                      (iii) Kingfisher                      (iv) Grackle
03. The Enharmonic Equivalent of F is,  
 (i) E<sup>#</sup>                      (ii) E<sup>b</sup>                      (iii) E                      (iv) E<sup>x</sup>
04. Which note is A double sharp

(i) (ii) (iii) (iv)

05. Chromatic Semitone below  is,

(i) (ii) (iii) (iv)

06.  The dot equals to,  
 (i)  (ii)  (iii)  (iv) 
07.  the kind of time would be,  
 (i) Simple duple                      (ii) Simple Triple                      (iii) Compound duple                      (iv) Simple Quadruple
08. The Major scale which has the key signature F<sup>#</sup> C<sup>#</sup> G<sup>#</sup> D<sup>#</sup> is,  
 (i) D Major                      (ii) A Major                      (iii) E Major                      (iv) B Major

09. The interval  is,

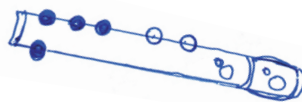
- (i) Major 2<sup>nd</sup>                      (ii) Major 3<sup>rd</sup>                      (iii) Perfect 3<sup>rd</sup>                      (iv) Perfect 4<sup>th</sup>

10. The sign for 'forte' is ,

- (i) f                      (ii) ff                      (iii) p                      (iv) pp

11. Recorder note of ..... is

- (i) G                      (ii) A  
(iii) B                      (iv) C



12. Which of the following is not the same ?


- (i) C<sup>#</sup>, D                      (ii) C<sup>x</sup>, D                      (iii) D, D<sup>b</sup>                      (iv) E<sup>#</sup>, F

13. Which of the following rests equal to the 2<sup>nd</sup> dot of a Double dotted minim?

- (i) Crotchet                      (ii) Quaver                      (iii) Minim                      (iv) Semi quaver

14. Lower tetra chord of A major is,

- (i) A<sup>b</sup> B<sup>b</sup> C<sup>b</sup> D                      (ii) E F<sup>#</sup> G<sup>#</sup> A                      (iii) A B C<sup>#</sup> D                      (iv) E<sup>b</sup> F G<sup>b</sup> A

15. The name of  is

- (i) B sharp                      (ii) C sharp                      (iii) D                      (iv) D sharp

16. Who was called 'Shakespeare in Music' ?

- (1) L.V. Beethoven                      (2) W.A. Mozart                      (3) F.J. Haydn                      (4) J.S. Bach

17. Number of semitones between C - E is

- (1) 4                      (2) 3                      (3) 2                      (4) 5

18. Between which degrees of the major scale are the semitones found?

- (1) 3 - 4, 7 - 8                      (2) 2 - 3, 5 - 6                      (3) 3 - 4, 5 - 6                      (4) 2 - 3, 7 - 8

19. How many semitones make a tone?

- (1) 3                      (2) 2                      (3) 4                      (4) 1

20. Which one of these drums are played with the hand and a stick?

- (1) Thammattama                      (2) Davula                      (3) Rabana                      (4) Udekkiya

( 20 Marks)

- Answer question No. 01 which is compulsory and two others

01. The following questions are based on the given music.

**LULLABY**

Rather slow

- (i) Write the name of this piece?  
.....
- (ii) How many rest marks are there?  
.....
- (iii) Name the rest marks you find in this pieces  
.....
- (iv) Explain the times signature of this piece.  
.....
- (v) How many minim notes you find here?  
.....
- (vi) Name the note marked by \* in Bass Stave  
.....
- (vii) Complete the last bar with a rest.  
.....
- (viii) Name the interval marked 'a'  
.....

(ix) How many bars are there ?

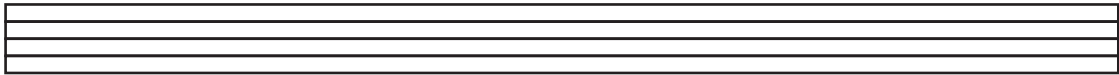
.....

(x) Write the English meaning of,

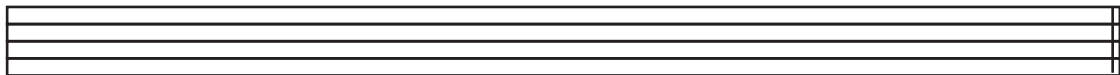
a. PP - .....

b. < .....(10 marks)

02. (a) D Major ascending in Treble Clef with key signature.



(b) Bb Major ascending and descending in Bass Clef without key signature.



(3 x 2)

(c) Mark the sentences right (✓) or wrong (✗)

(i) Triplet is a group of 3 notes

Played in the time of 2  
of the same kind.

(ii) The Magic flute is a composition.

by F. J. Haydn

(iii) Another name for Treble Clef is G Clef.

(iv) Double sharp raises a note by two semitones.

(04 marks)

03. a. Name these intervals



(02 marks)

b. Write the following notes



B double sharp

below the stave

as a minim

D flat above

the stave as

a quaver

(02 marks)

c. Write the required notes.

Diatonic semitone above      Chromatic semitone below      Diatonic semitone below      Chromatic semitone above

(04 marks)

d. Write the Enharmonic Equivalents for the following.

(02 marks)

04. a. Write a rest equal in value to the Dot of the given note.

(02 marks)

b. Write one note equal to the given tied notes.

(02 marks)

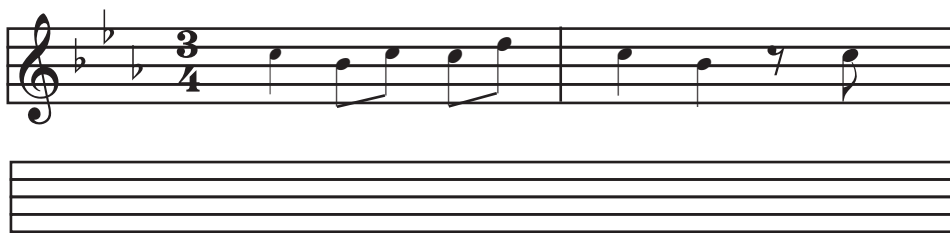
c. Put a suitable time - signature for the following bars.

(02 marks)

d. Insert barlines to the given music extracts.

(04 marks)

05. a. Transpose the following melody one octave lower into Bass Clef.



(1/2 x 8 = 4 marks)

b. Write the following

(i) An Oriental drum used in ceremonial occasions.

.....

(ii) Name 02 composers of classical period.

..... , .....

(iii) Who is the composer referred to as the 'Father of the Symphony'?

.....

(iv) Write two different types of Guitars.

..... , .....

(06 marks)

