

සියලුම හිමිකම් ඇවිරිණි  
முழுப் பதிப்புரிமையுடையது  
All Rights Reserved



විද්‍යාබද්ධ අධ්‍යාපන දෙපාර්තමේන්තුව  
බද්ධ විද්‍යාබද්ධ අධ්‍යාපන දෙපාර්තමේන්තුව  
Department of Education - Western Province  
Department of Education - Western Province  
Department of Education - Western Province  
Department of Education - Western Province  
Department of Education - Western Province  
Department of Education - Western Province

විද්‍යාබද්ධ අධ්‍යාපන දෙපාර්තමේන්තුව  
බද්ධ විද්‍යාබද්ධ අධ්‍යාපන දෙපාර්තමේන්තුව  
Department of Education - Western Province  
Department of Education - Western Province  
Department of Education - Western Province  
Department of Education - Western Province  
Department of Education - Western Province  
Department of Education - Western Province

විද්‍යාබද්ධ අධ්‍යාපන දෙපාර්තමේන්තුව  
බද්ධ විද්‍යාබද්ධ අධ්‍යාපන දෙපාර්තමේන්තුව  
Department of Education - Western Province  
Department of Education - Western Province  
Department of Education - Western Province  
Department of Education - Western Province  
Department of Education - Western Province  
Department of Education - Western Province

වර්ෂ අවසාන ඇගයීම  
ஆண்டிறுதி மதிப்பீடு - 2019  
Year End Evaluation

ශ්‍රේණිය } 08  
தரம் }  
Grade }

විෂයය }  
பாடம் } Science  
Subject }

පත්‍රය }  
வினாத்தாள் } I, II  
Paper }


කාලය } 02 hours  
காலம் }  
Time }

Name :-..... Index No :-.....

**Consider:**

- Answer all the questions on part I.
- Answer only 5 questions including the first question on part II.

**Part - I**

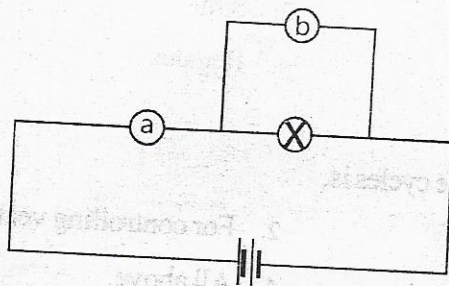
- The internal factor that is needed for the photosynthesis in green plants is.
  - Sunlight
  - Water
  - Carbon dioxide
  - Chlorophyll
- The group of animals that the following living being belongs which is having dry skin and no gland in the skin is,
 
  - Reptelia
  - Amphibia
  - Pisces
  - Arthropoda
- Not a function done by the underground stem.
  - Storing food
  - Hibernation
  - Photosynthesis
  - Plant propagation
- The process of oozing / releasing liquid drops when the humidity is high in the atmosphere is,
  - Transpiration
  - Guttation
  - Mass flow
  - Diffusion
- The unit of measuring resistance is,
  - Volt
  - Ampere
  - Watt
  - Ohm



06. Select the correct statement regarding the physical property in matter and the application of it.
1. Hardness – to make sand papers
  2. Brittleness – to make rubber balloons
  3. Hardness – to cut glass
  4. Elasticity – to make clay items
07. The element which shows bright flame and remain white powder after burning is,
1. Sodium
  2. Sulphur
  3. Aluminum
  4. Magnesium
08. Select the correct answer regarding the excretory organs.
1. Eye, skin and kidneys
  2. Skin, lungs and kidneys
  3. Lungs, eye and mouth
  4. Mouth, nose and eye
09. Consider the following living features.
- (a) Body is segmented
  - (b) Have bilateral symmetry
  - (c) Have vermiform body shape
- The group of animals that possess above features is,
1. Cnidaria
  2. Mollusca
  3. Arthropoda
  4. Annelida
10. Effects of micro – organisms when they act on food is,
1. Change its texture
  2. Change its taste
  3. Change the smell
  4. Change the color, texture, smell and the taste.
11. The food item which can be preserved by using the concentration is,
1. Milk
  2. Fruits
  3. Jak seeds
  4. Chillies
12. Not a factor that affects for the resistance of a conductor is,
1. Nature of the surface
  2. material of the conductor
  3. length of the conductor
  4. area of the cross section of the conductor

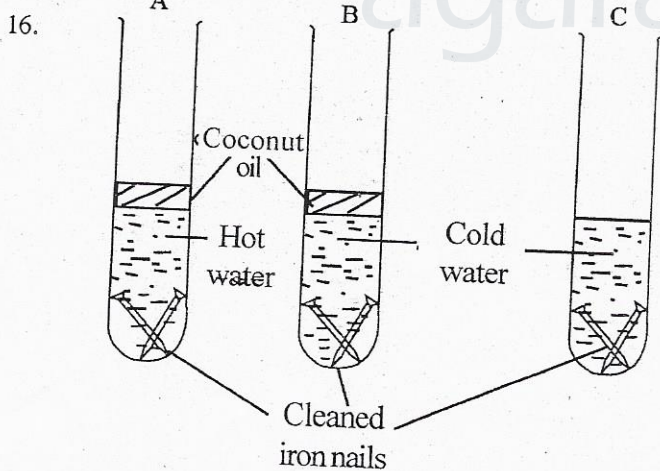


13. What are the equipments that should be connected to a and b places respectively to get the measurements in the bulb?



1. Voltmeter and ammeter
  2. Ammeter and voltmeter
  3. Ammeter and galvanometer
  4. Voltmeter and galvanometer
14. A chemical change is,
1. Dissolving copper sulphate in water
  2. Heating wax
  3. Putting a piece of sodium into water
  4. Tearing a paper into small pieces

15. Select the correct statement relevant to the functions of the following parts of the central nervous system
1. Cerebrum – controls the heart beat
  2. Cerebellum – Controls the body balance
  3. Medulla – Controls the automatic functions
  4. Spinal cord – controls higher brain functions



One of the observations that can be gained by the above experiment (which is carried out for the investigation of rusting of iron) is

1. Iron nails in test tube A are not rusted
2. Iron nails in test tube B are not rusted
3. Iron nails in test tube C are not rusted
4. Iron nails in A and C test tubes are rusted

17. The star that appear as not moving from eastern to western direction at night sky is
1. Polaris
  2. Sirius
  3. Pollux
  4. Regulus
18. The importance of studying about the life cycles is,
1. For controlling pests.
  2. For controlling vectros.
  3. For the protection of bio-diversity.
  4. All above.
19. The thing that we should not do during lightning is,
1. Disconnect electricity at home
  2. Get away from tall trees which alone and higher places
  3. Drive foot bicycles, motor cycles and tractors
  4. Avoid from riding boats and swimming in reservoirs
20. The method of treatment which is used for mental relaxation using music is,
1. Homeopathy
  2. Musical therapy
  3. Nerve therapy
  4. Eye therapy

(20 x 2 = 40 mark)

agaram.lk

Agaram.LK - Keep your dreams alive!

Agaram.LK - Keep your dreams alive!



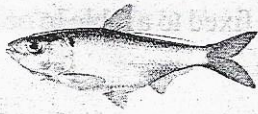
Part II

- The first Question is compulsory.
- Answer five questions including first one.

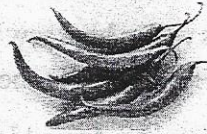
(01) (A) Some food items bought from the market are given below.



Milk



fish



chillies



mango

- What is the traditional method of preserving fish and chillies? (1 mark)
- Name the product that you can make in the laboratory using mango (1 mark)
- Which preservative has used in above? (1 mark)
- Write two advantages of food preservation. (2 marks)
- Define self-degradation. (1 mark)
- Write four important information in a label of a food package. (2 marks)
- Give two examples for precooked food items. (2 marks)

(B) Fill in the blanks using the physical properties of matter.

	Shape	Volume	Compressibility
Solid	(i) .....	(ii) .....	Cannot be compressed
Liquid	No definite shape	(iii) .....	(iv) .....
Gas	(v) .....	No definite volume	(vi) .....

(C) (1/2 x 6 = 3 mark)

A set up used for an experiment in the laboratory is given above.

- Which property is tested by the above experiment? (1 mark)
- In which metal that we could observe the change at first? (2 marks)

(16 Total marks)

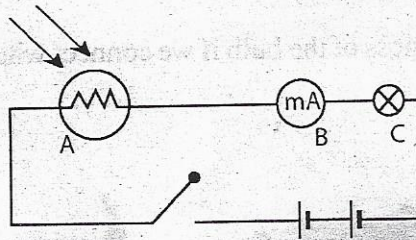


(02) (A) Mark '✓' if the statements are correct and mark 'X' if the statements are incorrect.

- (i) Pure substances with definite properties which cannot be further divided by physical or chemical methods into substance are known as elements. ( )
- (ii) Total mass can be changed if we done chemical reaction in an closed system. ( )
- (iii) Complete combustion occurs in the invisible zone of Bunsen flame. ( )
- (iv) Nature of the particles can be explained using the features like shape, volume, compressibility and the density. ( )
- (v) Geo-stationary satellites can be used for communication. ( )

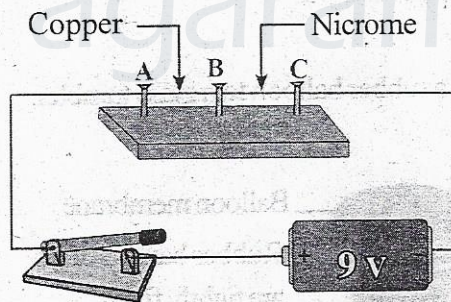
(1 x 5 = 5 marks)

(B) Following circuit diagram shows an experiment used to study the function of special electrical in the laboratory.



- (i) Name A and B equipment's mention in the circuit diagram. (2 marks)
- (ii) Explain briefly by using the function of A, why the bulb is not lighted when we cover A (expose it from light) but it is lighted up when we hold a lighted torch on A when the switch on (2 marks)
- (iii) Write the following equipment in the ascending order of their efficiency.
  - P - 240V, 60 W filament bulb
  - Q - 240V, 14 W CFL - bulb (CFL)
  - R - 240V, 7 W LED - bulb
 (1 mark)
- (iv) Write one fact that should be considered when using electrical appliances. (1 mark)

(03) (A)



Above diagram shows how electricity flows though copper and Nichrome wires at the same time.

- (i) Which effect of electric current is investigate from this activity? (1 mark)
- (ii) Mention the observation comparatively when touching two wires, after completing the circuits (1 mark)
- (iii) Mention an instance with the example where the above effect of current considers disadvantages. (2 marks)
- (iv) Write two properties of a wire that can be used to make an equipment to cut regifoam using electricity. (2 marks)



(B) Fill in the blanks using the appropriate words.

Naturally occurring destruction of man, causing harm to human lives, property, environment and economy is known as (i) ..... Two such occasions which effect for Sri Lanka are (ii) ..... and (iii) ..... Increase of (iv) ..... of surface water in Pacific ocean causes for (v) .....

(1 x 5 mark)

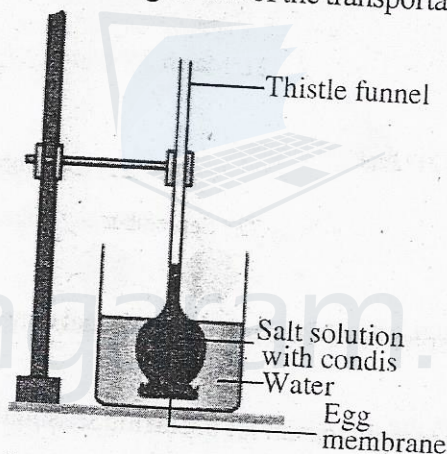
(Total 11 marks)

(04) (A) Fill in the blanks using the correct words given below.

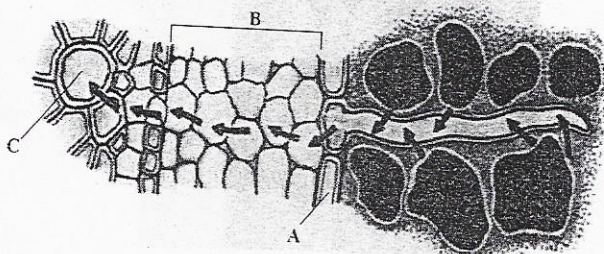
- (i) The filed of magnetic effect around a magnet is .....
  - (ii) ..... is used to make permanent magnets and ..... is used to make temporary magnets.
  - (iii) Electric magnets are used practically in ..... which is used at home.
  - (iv) ..... is the magnetic field existing near the earth.
- (ferrite, magnetic field, soft iron, electric bell, geomagnetism)

(1 x 4 marks)

(B) Following setup is used to investigate one of the transportations in the laboratory.



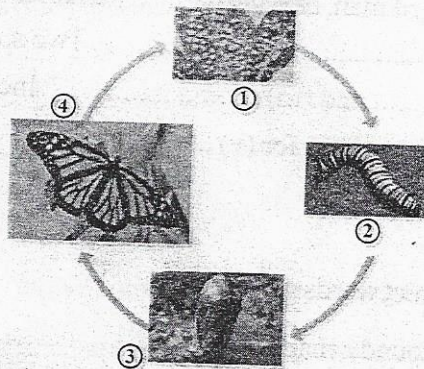
- (i) Write one observation after few minutes. (2 marks)
- (ii) Which type of membrane that egg membranes act us? (1 mark)
- (iii) Name the process that material are transported using the above method. (1 mark)



- (iv) Name A and B in the above diagram. (2 marks)
- (v) Whether the energy required for a plant to transport water from root hair to C or absorb water with minerals to the cell. (1 mark)

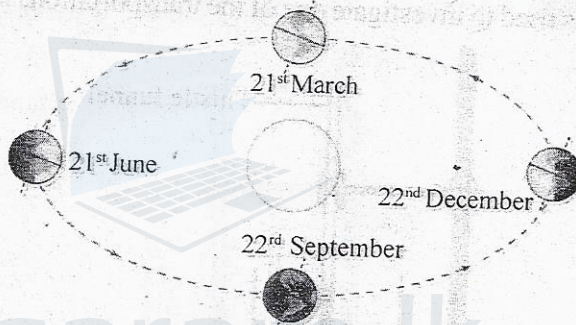


(05) (A) Life cycle of the insect which has caused for the destruction of maize cultivation in Sri Lanka is given below.



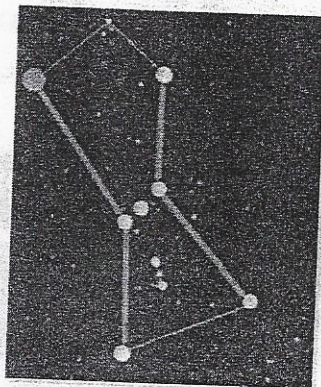
- (i) Name (2) and (3) Stages of the above life cycle. (2 marks)
- (ii) Mention the type of metamorphosis is the above one. (1 mark)
- (iii) What is specific name of stage 2 which causes the destruction in maize cultivation. (1 mark)
- (iv) Mention one traditional eco-friendly method of controlling pests by the ancient farmers. (1 mark)

(B) Sketch diagram of seasonal changes due to the revolution of the earth is given below.



- (i) To which hemispheres of the earth that seasonal changes summer and winter occur in 21<sup>st</sup> June (2 marks)
- (ii) What is the other main reason for occurring seasonal change (1 mark)

Following star pattern could be seen in the sky months of February and march at 8.00 pm



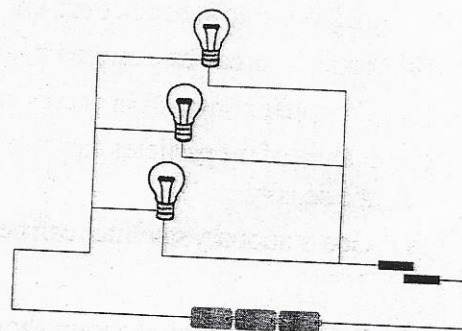
- (iii) Name the above star pattern. (1 mark)
- (iv) Explain briefly how can you find out the directions of the earth using the above star pattern. (1 mark)
- (v) Mention comparatively how can you differentiate a star and a planet at night. (1 mark)

(11 marks)

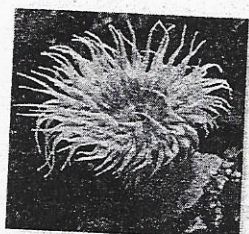


(06) (A)

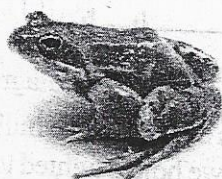
- (i) Write the method of connecting bulbs in the above circuit. (1 mark)
- (ii) Write the method of connecting dry cells in the above circuit. (1 mark)
- (iii) Draw the above circuit using the symbols. (2 marks)
- (iv) Write one advantage of connecting bulbs as it is in the above circuit. (1 mark)
- (v) What will happen to the brightness of the bulb if we connect whole current to flow through the above three bulbs. (1 mark)



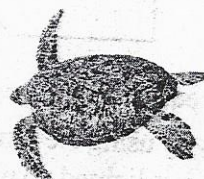
(B)



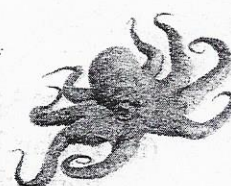
a



b



c

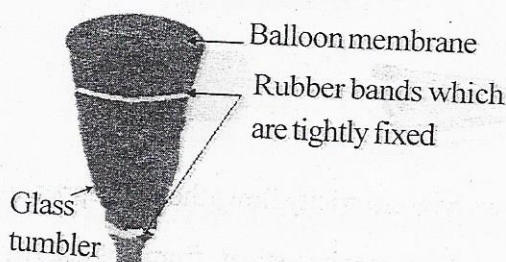


d

- (i) Name the group of animals that above a, b, c and d belong. (1/2 x 4 = 2 marks)
- (ii) Categorise the above animals into vertebrates and invertebrates. (1/2 x 4 = 2 marks)
- (ii) Name an organism which has radial symmetry. (1 mark)

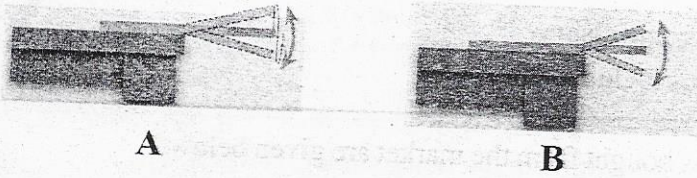
(Total 11 marks)

(07) (A) An equipment made by fixing a rubber balloon to a glass tumbler.



- (i) What can you say about the sound when the balloon membrane stretched more? (1 mark)
- (ii) Name the quality of sound that change here (1 mark)
- (iii) Mention separately what will happen to the frequency when we make the length of the wire short and thin of a violin. (2 marks)

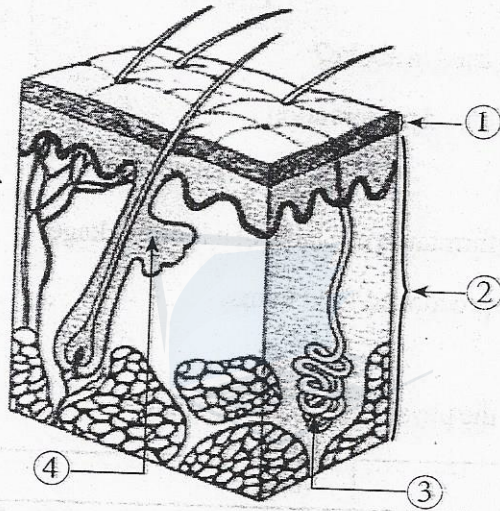




Two occasions where hacksaw blades are fixed to a table In occasion 'A' vibrating in longer length and in 'B' vibrating in shorter length.

- (iv) Write the reason if the hacksaw blade A vibrates no sound is heard. (1 mark)
- (v) What is the limits of hearing of sound to the human ear. (1 mark)

(B) Following is a three dimensional diagram of skin.



- (i) Name the part (1) and the pigment produced by the cell in lower layer of that. (2 marks)
- (ii) Write the relevant number and name the gland which is helped to control the body temperature. (2 marks)
- (iii) Mention one strategy to maintain a healthy skin. (1 mark)

(11 marks)