



Grade 8

Health and Physical
 Education.

Unit : 11 - Let us Safeguard
 Reproductive Health

Part I

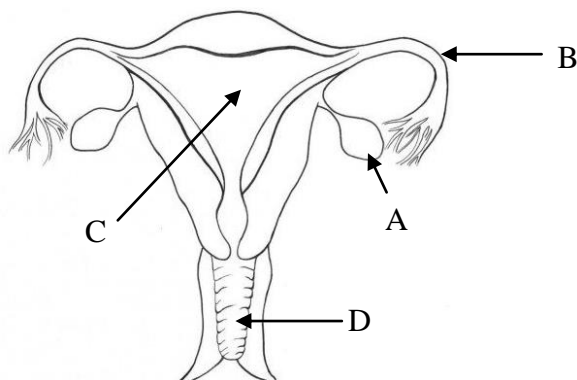
• **Underline the most suitable answer.**

- (1) An organ in male reproductive system is,
 i) Fallopian tube ii) Penis
 iii) Cervix iv) Uterus
- (2) A sexually transmitted disease /s is/are
 i) Gonorrhoea
 ii) Genital warts
 iii) Syphilis
 iv) All of the above
- (3) The duration of menstrual cycle is,
 i) 14 days ii) 28 days
 iii) 30 days iv) None of the above
- (4) This is not a factor which helps to maintain reproductive health.
 i) Unplanned pregnancies
 ii) Adequate knowledge
 iii) Healthy behaviours
 iv) Following social norms.
- (5) The foetus receives nutrition and oxygen from the mother through the
 i) Endometrium
 ii) Umbilical cord
 iii) Fallopian tube
 iv) Uterus

Part II

- Answer all questions.

1) I. Name the parts of the following female reproductive system.



II. What do you mean by ovulation?

III. Briefly explain about fertilization.

IV. Fill in the blanks using suitable words.

- a) The foetus develops in the mother's uterus for nearly months.
- b) In a female ovulation stops by the age of
- c) The female reproductive organs are situated in the

2) 1. Write 3 barriers to reproductive health.

2. State 3 negative impacts of sexual harassment and abuse.

3. Write 2 behaviours which help to maintain reproductive health.

4. Write 2 social norms that help to maintain reproductive health.



agaram.lk