

Nalanda College – Colombo 10

Unit Evaluation

GRADE 9

WESTERN MUSIC

UNIT 6: All simple time signatures, compound duple, Duplet and Triplet

PAPER I

(01) Which of the following time signatures is half the value of $\frac{6}{4}$?

1) $\frac{6}{8}$

2) $\frac{3}{4}$

3) $\frac{9}{8}$

4) $\frac{4}{2}$

(02) The number of beats in a bar when the time signature is $\frac{9}{8}$ can be,

1) 9 crotchet beats in a bar

3) 3 dotted crotchet beats in a bar

2) 3 dotted minim beats in a bar

4) 9 dotted crotchet beats in a bar

(03) A Duplet is a group of two notes played in the time of,

1) One note

2) three notes

3) two dotted notes

4) four notes

(04) Which of the following rests is used for a whole bar of silence in $\frac{3}{4}$ time?

1) Dotted minim

2) Minim

3) Semibreve

4) Dotted semibreve

(05) Which of the following time signatures is double the value of $\frac{3}{4}$?

1) $\frac{6}{8}$

2) $\frac{2}{3}$

3) $\frac{4}{8}$

4) $\frac{3}{2}$

(06) Which of the following is equal to



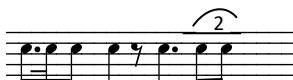
1) one crotchet

2) Quaver

3) dotted crotchet

4) minim

(07) What is the time signature of this bar?



1) $\frac{6}{16}$

2) $\frac{12}{16}$

3) $\frac{12}{8}$

4) $\frac{4}{8}$

(08) Which of the following irregular note group could be used for both simple and compound times?

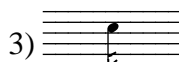
1) Septuplet

2) Sextuplet

3) Duplet

4) Triplet

(09) The value of the second dot in the double dotted quaver equals to,



(10) Which of the following time signatures is **not** suitable for a March?

1) $\frac{4}{4}$

2) $\frac{6}{8}$

3) $\frac{2}{4}$

4) $\frac{9}{4}$

