



Royal College - Colombo 07

Year End Evaluation - 2019

Grade 9

Information Technology

Time: 1 1/2 hours

Index No:.....

Name:.....

Class:.....

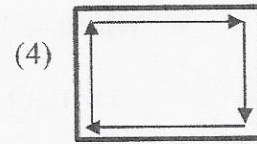
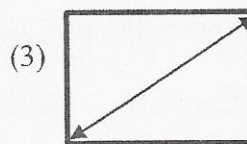
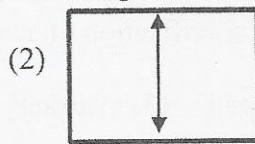
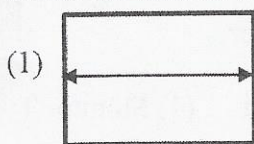
PART I

Answer all questions.

In each of the questions 1 to 20, pick one of the alternatives (1), (2), (3), (4) which you consider as correct or most suitable.

(2 x 20 = 40 Marks)

1. Select the correct way of measuring the monitor size.



2. What is e-commerce?

- (1) Buying and selling international goods
- (2) Buying and selling products and services over the Internet
- (3) Buying and selling computer products
- (4) Buying and selling products and services not found in stores

3. Consider the following devices:

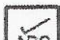
- A. Mouse
- B. Projector
- C. Touch Screen

Which of the above can be used both as input and output device?

- (1) A only
- (2) B only
- (3) C only
- (4) B and C only

4. Which of the following communication media uses the reflection of light to transmit data?

- (1) Unshielded Twisted Pair (UTP)
- (2) Shielded Twisted Pair Memory
- (3) Coaxial Cable
- (4) Optical Fiber

5. The task of  icon in MS Excel is,

- (1) Paste a text
- (2) Copy a text
- (3) Check spelling and Grammar
- (4) Change the color of a text

6. What word describes the instructions used to control sprites in Scratch?

- (1) Score
- (2) Command
- (3) Script
- (4) Operators

7. Some peripheral devices are given below.

- A. Keyboard
- B. Printer
- C. Monitor
- D. Mouse

Which of the above devices can be connected to the computer using a USB Port?

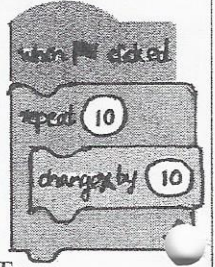
- (1) A, B and D only
- (2) A, C and D only
- (3) B, C and D only
- (4) A and C only

8. Which of the following cannot be considered as toxic poison?
 (2) Arsenic (2) Cadmium (3) Oxygen (4) Mercury

9. The given image represents the 
 (1) VGA Port (2) HDMI Port (3) PS/2 Port (4) RJ45 Port

10. The gap between those individuals in our society who are computer literate and have access to information resources like the Internet and those who do not is referred to as the?
 (1) Computer Literacy (2) Computer Crime (3) Digital Divide (4) Privacy Divide.

11. In Scratch programming what happens to the sprite if the following code executes?
 (1) Go Up (2) Go Down (3) Go Left (4) Go Right



12. Which of the following is a non-technical specification of a computer?
 (1) Hard Disk Capacity (2) CPU Speed (3) Warranty Period (4) Monitor Type

13. Which of the following is not an electronic waste?
 (1) Mobile Phones (2) CD and Covers (3) Electric Cells (4) Immersion Heater

• Answer the question numbers 14 and 15 using the spreadsheet segment given below.

Values of y are to be calculated using the equation $y=px+q$ for given values of x. Values of p and q constants are given in cells B1 and B2 respectively; values for x are given in the cell range C2:C5.

| | A | B | C | D |
|---|---|---|----|---|
| 1 | p | 3 | x | y |
| 2 | q | 2 | -1 | |
| 3 | | | 0 | |
| 4 | | | 1 | |
| 5 | | | 2 | |

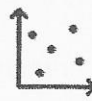
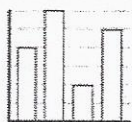
14. The Formula to be written in cell D2 to get the value of y, when x=0 is

- (1) =A1*C3+ A2 (2) =B1*C3+ B2
 (3) =A1*C2+ A2 (4) =B1*C2+ B2

15. Assume that you got all the other values for y in cell range D2:D5. What is the formula to be written in the cell D6 to get the highest value of y?

- (1) =AVERAGE(D2:D5) (2) =COUNT(D2:D5)
 (3) =MAX(D2:D5) (4) =MIN(D2:D5)

16. Which answer gives the below chart types in the respective order they appear.



- (1) Pie, Column and Scattered (2) Pie, Scattered and Column
 (3) Column, Scattered and Pie (4) Column, Pie, Scattered

17. If you want to send a message to all, in the computer network using Command line Interface what should you include as the recipient?

- (1) Student (2) Computer1 (3) All (4) *

18. Which of the following is/are Control Structures?

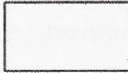
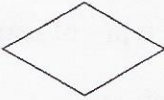

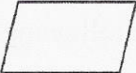
- A. Sequence B. Selection C. Iteration

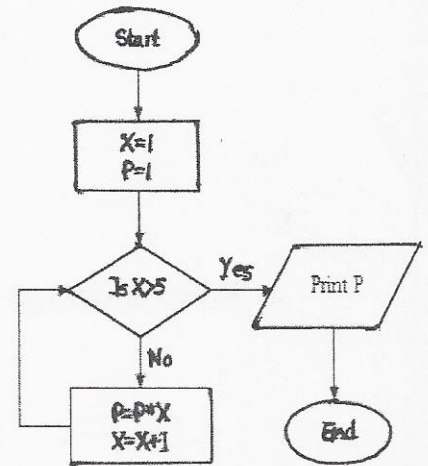
- (1) A only (2) B Only
 (3) A & B only (4) A, B and C all

19. What is the output of the given flow chart?

- (1) 6 (2) 12 (3) 24 (4) 120

20. The symbol used to represent a process is

- (1)  (2)  (3)  (4) 

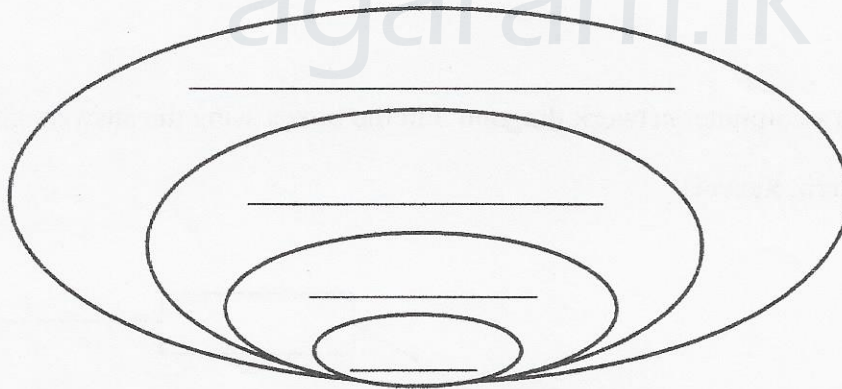


PART II

Answer all questions.

1.

a) Complete each layer of the following computer system layers diagram using correct terms given below. [Application Software, Hardware, User, Operating System]



(4 marks)

b) Ashan is a Graphic Designing undergraduate of University of Moratuwa. He needs to buy a computer that can be used for graphic designing during the practical sessions in the university.

I. What is the most suitable computer type for Ashan? (1 mark)

II. Write 3 technical specifications to be considered when buying a computer?

(3 marks)

III. Write 2 non-technical specifications he should consider?

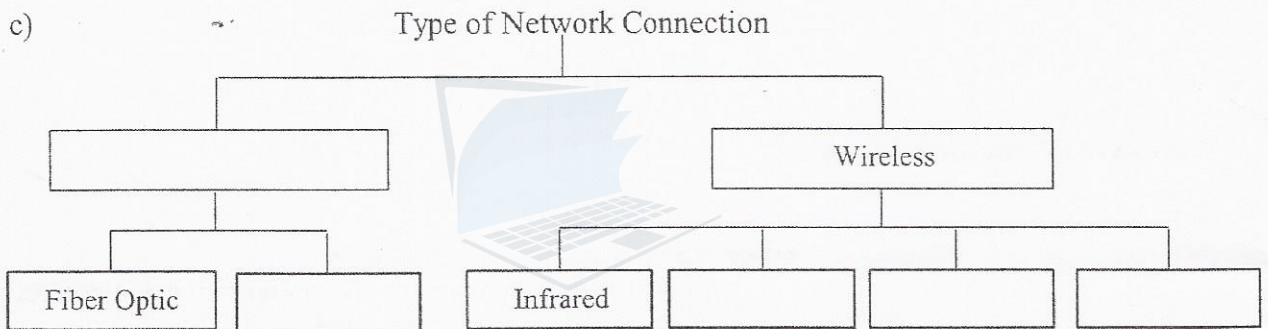
(2 marks)

2.

a) Write 2 advantages of networking computers?

(2 marks)

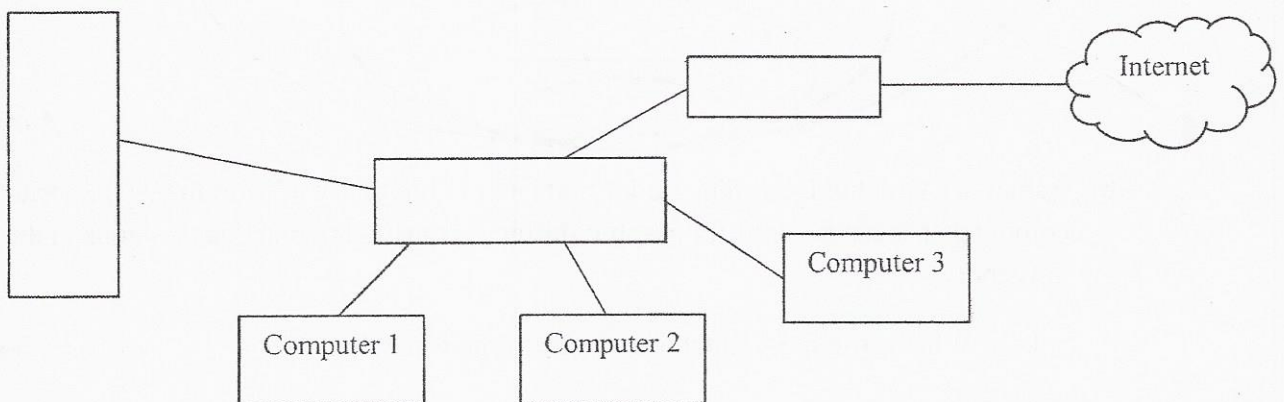
b) Fill the boxes in the following diagram based on the types of network connection.



(5 marks)

d) Given below is a computer network diagram. Fill the boxes using the answers given in list.

[Router, Switch, Server]



(3 marks)




3. Answer the following questions using the MS Excel sheet provided:

| | A | B | C | D | E | F | G | H | I | J | K |
|----|---------------------------|-------------------|----------------|--------------|----------------|--------------|----------------|---------------|------------------------|---|---|
| 1 | | | | | | | | | | | |
| 2 | Student Exam Marks | | | | | | | | | | |
| 3 | Name | Surname | English | Maths | Science | Total | Highest | Lowest | Student Average | | |
| 4 | Pavan | Abeyasinghe | 53 | 67 | 78 | 198 | 78 | 53 | 66 | | |
| 5 | Rajiva | Weerakoon | 67 | 60 | 70 | 197 | 70 | 60 | 65 | | |
| 6 | Kasun | Abeykoon | 62 | 85 | 63 | 210 | 85 | 62 | 70 | | |
| 7 | Darshana | Ranasinghe | 90 | 79 | 84 | 253 | 90 | 79 | 84 | | |
| 8 | Sumeda | Rathnayaka | 83 | 86 | 78 | 247 | 86 | 78 | 82 | | |
| 9 | Chiran | Gomez | 73 | 78 | 70 | 221 | 78 | 70 | 74 | | |
| 10 | | | | | | | | | | | |
| 11 | | Students in class | | 6 | | | | | | | |

- a) Cell Shows text rotated 45 degrees.
- b) Cells are merged and centered.
- c) Cell.....has text wrap applied to it.
- d) Cell.....is the active cell.
- e) Write the required formulae to get the Total, Highest and Student Average of Pavan Abeyasinghe.
 Total =..... Highest =..... Average =.....

f) Complete the given formulae in E11 to find the **number of students**.
 =COUNT(.....)

g) The titles from **H3:K4** are centered True False

h) Draw a circle around the **merge and center** button   
 (10 marks)

a) Write 2 examples each for the usage of ICT in the following sectors.

| School -e-learning | Public Sector -e-governance |
|--------------------|-----------------------------|
| | |
| | |

(4 marks)

b) Write 2 reasons for Digital Divide.

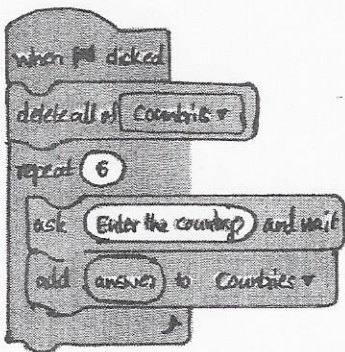
(2 marks)

c) Match the correct job description with the job title.

| Job Title | Corresponding Letter | Job Description |
|------------------------------|----------------------|--|
| 1. Programmer | | A. Designs, develops and maintains websites. |
| 2. Network Administrator | | B. Designs and develops software. |
| 3. Software Engineer | | C. Develops computer programs using programming languages. |
| 4. Web Application Developer | | D. Installs, configures and maintains computer network. |

(4 marks)

5. Find answers based on the array called "Country" shown below.

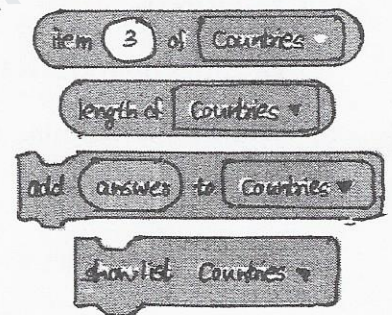


a) How many times will the above program be repeated once it is executed? (1 mark)

b) How many countries can be assigned to the array "Countries"? (1 mark)

c) Match the statements with the instruction given below.

- i. Number of items in the array
- ii. Entering items into the array
- iii. To show all the items in the array
- iv. The third item in the array



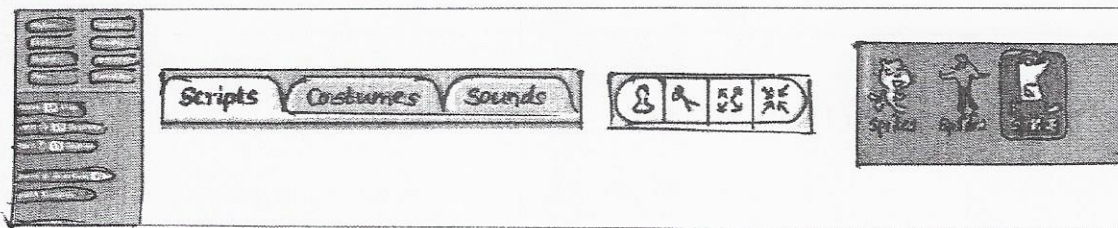
d) Match the following parts of the Scratch interface with the images

Sprite List

Blocks Palette

Tool Bar

Tabs

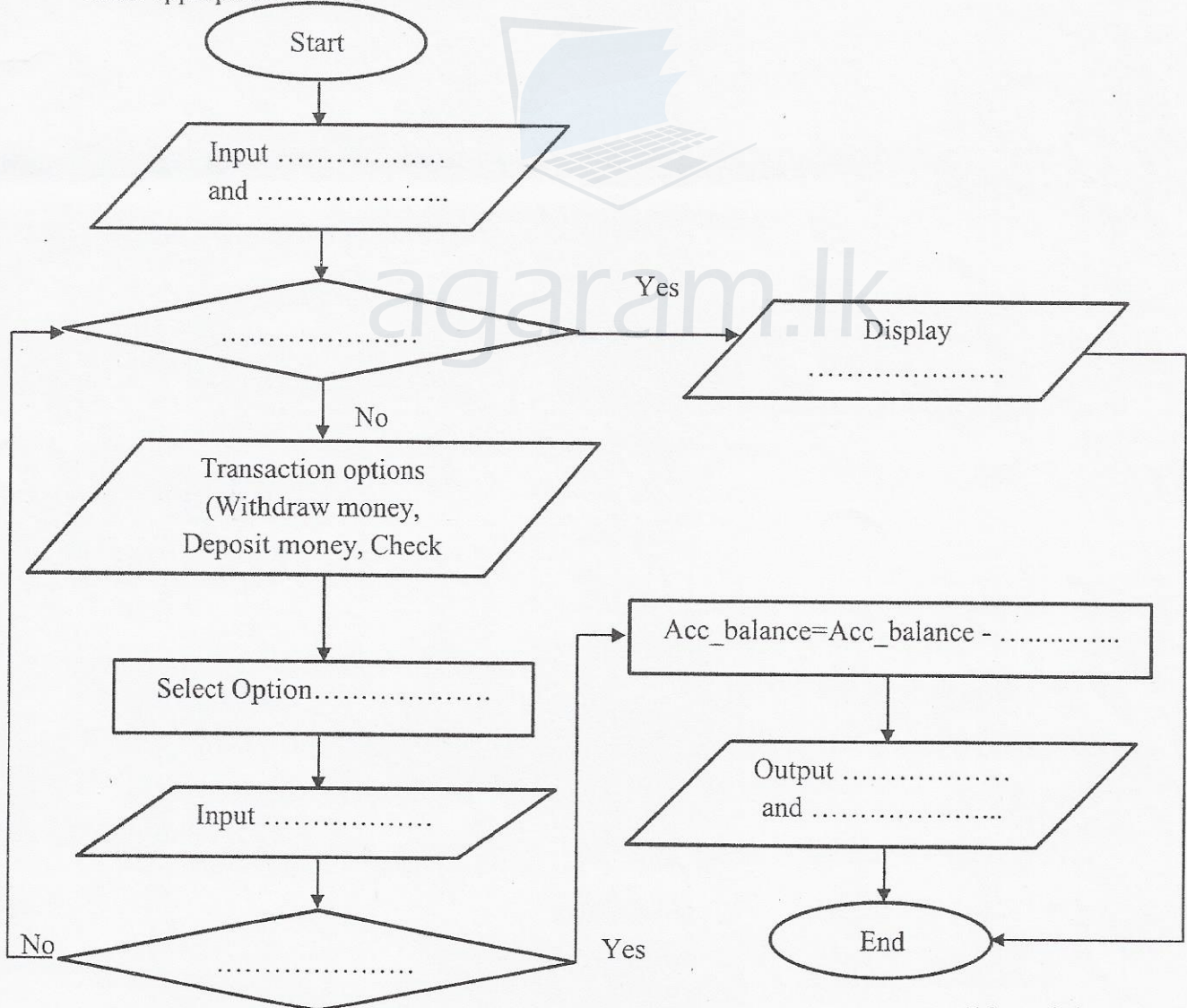


(4 marks)

6. Saman wants to withdraw money from an ATM machine. So, he goes there and performs following activities.

- He enters ATM card and the pin number
- Machine validates the pin number and displays an error message "Invalid pin" if he enters a wrong pin number
- If he enters the correct pin number system displays several transaction options (Deposit money, Withdraw money, Check balance)
- Saman selects "Withdraw money" option.
- Then he enters withdrawal amount.
- Next the machine checks withdrawal amount with the account balance
- If $\text{account balance} \geq \text{withdrawal amount}$, machine ejects money, receipt and card. Finally, it displays the updated account balance on the screen.
- If $\text{account balance} < \text{withdrawal amount}$, system will display, "Your account balance is insufficient, do you wish to try with another amount?"
- Then user input his choice
- If his choice="No", ATM eject his ATM card.
Else ATM displays transaction options (Deposit money, Withdraw money, Check balance, again allowing user to input another withdrawal amount. (Hint: Repetition is used)

a) Flow chart given below represents the above scenario. You need to fill the blanks using the most appropriate words.



(10 marks)



agaram.lk