

සියලුම හිමිකම් ඇවිරිණි / All Rights Reserved


 Provincial Department of Education වයඹ පළාත් අධ්‍යාපන දෙපාර්තමේන්තුව Provincial Department of Education
 Provincial Department of Education වයඹ පළාත් අධ්‍යාපන දෙපාර්තමේන්තුව Provincial Depa
 Provincial Department of Education වයඹ පළාත් අධ්‍යාපන දෙපාර්තමේන්තුව Provincial Depa
 Provincial Department of Education වයඹ පළාත් අධ්‍යාපන දෙපාර්තමේන්තුව Provincial Depa
 Provincial Department of Education වයඹ පළාත් අධ්‍යාපන දෙපාර්තමේන්තුව Provincial Depa
 Provincial Department of Education වයඹ පළාත් අධ්‍යාපන දෙපාර්තමේන්තුව Provincial Department of Education

61	S	I
----	---	---

වයඹ පළාත් අධ්‍යාපන දෙපාර්තමේන්තුව
Provincial Department of Education - NWP

දෙවන වාර පරීක්ෂණය - 11 ශ්‍රේණිය - 2019
Second Term Test - Grade 11 - 2019

Name/Index No. : Geography - I Time : 1 hours

- * There are 40 questions in this paper.
- * Answer all the questions on this paper itself using given guidelines.

- * **Select the answer and write it on the given space for question no. 1 to 10.**
- (01) Obstructions for the survival of life, and changes in the atmosphere may occur due to addition of to the atmosphere as a result of various human activities.
(Nitrogen/ Oxygen/ Carbon dioxide)
- (02) Soil, water and are non living components that affect the processes in the biosphere.
(Animals/ Plants/ Sunlight)
- (03) The consists of liquid metal and iron.
(Crust/ Mantle/ Core)
- (04) Sacramento valley which is paddy cultivated area outside of Asia is located in the continent of (North America/ Africa/ Europe)
- (05) Caboc mixed red soil is very suitable for cultivation.
(Tea/ Rubber/ Coconut)
- (06) Competition from substitutes is a problem related to of agriculture in Sri Lanka.
(trade/ environment/ production)
- (07) Vein graphite is spread in in Sri Lanka
(Bogala/ Pinnawala/ Thalathuoya)
- (08) Plants like are grown in North western and south east of Sri Lanka where the temperature is more than 27°C
(Karamba, Eraminiya/ Milla, Teak/ Hora, Keena)
- (09) is a south Asian country which has the least growth rate of population
(Maldives/ Sri Lanka/ Nepal)
- (10) The Grate Barrier range is located in the continent of
(Africa/ Asia/ Australia)

- * **If the following statement are correct circle 'T' if not circle 'F' for question no. 11 to 15.**
- (11) The large mountain ranges on the earth are created as a result of earth quakes. T/F
- (12) The upper boundary of the Mesosphere extends up to 50km from the sea level. T/F
- (13) It is only 64% of the land of the world that cover the population concentration. T/F
- (14) Alluvial soil is spreaded around river valleys in both wet and dry zones in Sri Lanka. T/F
- (15) The Miociene limestone strip that spreaded in Jaffna penisular and coastal belt in North Western belong to Metamorphic rocks. T/F

Agaram.LK - Keep your dreams alive!

Agaram.LK - Keep your dreams alive!

※ Match A with B with their relationship and write the number of the answer on the given space for question no. 16 to 20.

(16) Side A shows the names of some physical features and side B shows the continents that they are located.

A

1. Blye plateau
2. Apalechian mountains
3. Nullabar plain

B

- A - Continent of North America
- B - Continent of Africa
- C - Continent of Europe
- D - Continent of Australia

- (1) B, A, D (2) D, A, B (3) B, C, D (4) D, A, C (.....)

(17) Side A shows the names of forests in the world and side B shows the specific features of them.

A

1. Tropical rain forests
2. Tempercete forests
3. Coniferous forests

B

- A. leaves are needle shaped
- B. Speedy growth of plants
- C. there are evergreen and deciduous trees
- D. leaves are thick

- (1) C, D, B (2) B, C, A (3) A, B, C (4) C, A, D (.....)

(18) Side A shows the paddy research centres and side B shows the provinces that they are located.

A

1. Mahailuppallama
2. Ambalanthota
3. Bombuwala

B

- A. Western province
- B. Southern province
- C. North central province
- D. Sabaragamuwa province

- (1) B, A, D (2) C, B, D (3) C, B, A (4) A, C, B (.....)

(19) Side A shows some traditional industries in Sri Lanka and side B shows the areas that they are located.

A

1. Masks
2. Cane products
3. Brass ware

B

- A. Pilimathalawa
- B. Koggala
- C. Ambalangoda
- D. Radawadunna

- (1) B, C, A (2) C, B, D (3) A, C, B (4) C, D, A (.....)

(20) Side A shows the densely populated cities in the world and side B shows the countries that they are located.

A

1. Mumbai
2. Tokiyo
3. London

B

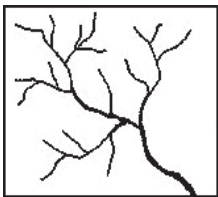
- A. Japan
- B. China
- C. Grate Britain
- D. India

- (1) A, C, D (2) D, A, C (3) B, A, C (4) C, B, D (.....)

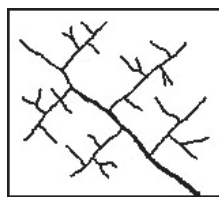
※ Complete the blanks using suitable words for question no. 21 to 26.

- (21) Volga river flows into..... sea.
- (22) The continental crust consists of rocks.
- (23) The Agro technological park of Sri Lanka is located in district.
- (24) are distributed in the coastal areas near rivers, river mouth and lagoons.
- (25) The high and lengthy strong ocean waves caused as a result of the different tremors origin at the ocean bed, that approach the coastal area are called
- (26) The organic fertilizer center of Sri Lanka is located in district.

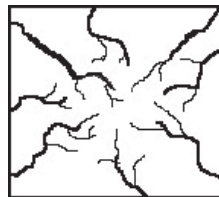
※ Answer question number 27 & 28 using given pictures related to drainage patterns.



A



B



C



D

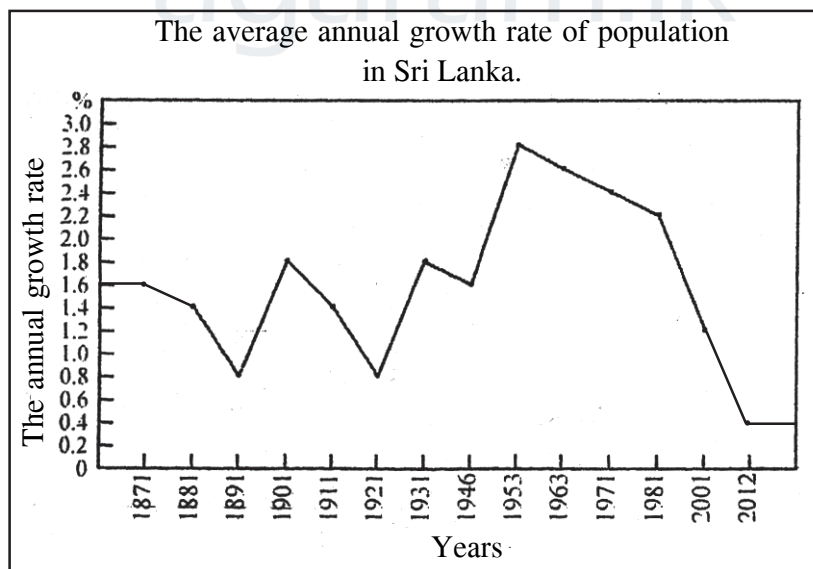
(27) What is the letter that shows the trellis pattern?

- (1) A
 - (2) B
 - (3) C
 - (4) D
- (.....)

(28) What is the letter that shows dendritic pattern?

- (1) A
 - (2) B
 - (3) C
 - (4) D
- (.....)

※ Study the given graph and answer question no. 29 and 30.



(29) According to the above graph, the highest growth of population can be seen in year

(30) The rate of the growth of population was taken a low rate in equal number.

This rate is

✱ **Select the most suitable or the correct answer for question no. 31 to 40 and write the number of the answer on the given space.**

- (31) What is the sphere that has the difference between the temperature of day and night is at a higher level?
 (1) Troposphere (2) Stratosphere
 (3) Mesosphere (4) Thermosphere (.....)
- (32) What is the country that is located in the urasian tectonic plate?
 (1) British islands (2) Cuba
 (3) Madagascar (4) Greenland (.....)
- (33) What is the relief feature that can be created due to the deposition of sediments in the middle of the river while the river flows very slowly through low plains?
 (1) Marshy lands (2) Islands
 (3) Braided river (4) River mouth (.....)
- (34) Fish that are bred in the fresh water bodies in Sri Lanka are,
 (1) Lula, Kanaya (2) Hunga, Catla
 (3) Catla, Grass carp (4) Thilapiya, Kavaiya (.....)
- (35) Hematait, Magnatite, Limonaite are belonged to the
 (1) Limestone (2) Graphite
 (3) Mineral sand (4) Iron ore (.....)
- (36) What is the natural reserve that the public is permitted to enter these areas only for scientific research purposes?
 (1) Haggala (2) Sinharaja
 (3) Wasgamuwa (4) Triconamadu (.....)
- (37) In a 1 : 50 000 topographic map, a tank is drawn with area of 16cm². What is the answer that it is in kilometres?
 (1) 5 km² (2) 4 km²
 (3) 8 km² (4) 2 km² (.....)
- (38) Where does the Coconut Research Institute locate?
 (1) Mathale (2) Tangalle
 (3) Lunuwila (4) Agalawatta (.....)

✱ **Study the given topics A, B, C and D carefully and answer the questions no. 39 and 40.**

A - 1. Birthrate

B - 1. Air pollution

2. Bottom of the pyramid

2. Use fossil fuel

C - 1. Use solar power

D - 1. Blance of the environment

2. environmental pollution

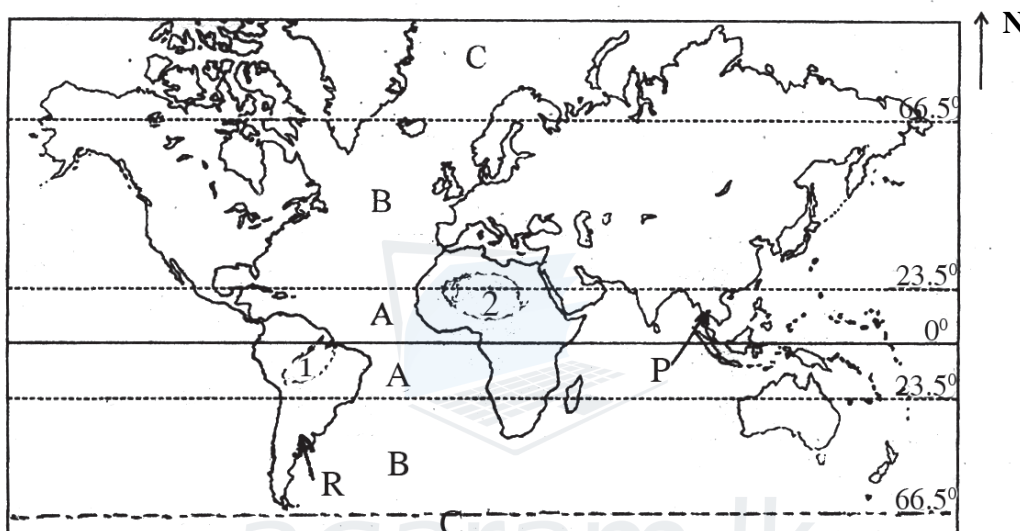
2. Sustainable development

- (39) What is the pair that the existence of the first one is necessary to the second one?
 (1) A (2) B (3) C (4) D (.....)
- (40) What is the pair that the second one affects harmfully to the first one?
 (1) A (2) B (3) C (4) D (.....)

- (c) Study the given map of Sri Lanka and answer the following questions.
- (i) The letter shows Dambulla that was an old tourist city among the letters A, B & C.
 - (ii) The letter shows the Anavilundawa reserve among the letters D, E & F
 - (iii) The letter shows Ginigathhena which breed fresh water fish among the letters G, H & J
 - (iv) The letter shows Okkampitiya where gems can be found.
 - (v) The letter shows Delft island among the letters P, Q and R. (5 marks)

Part II

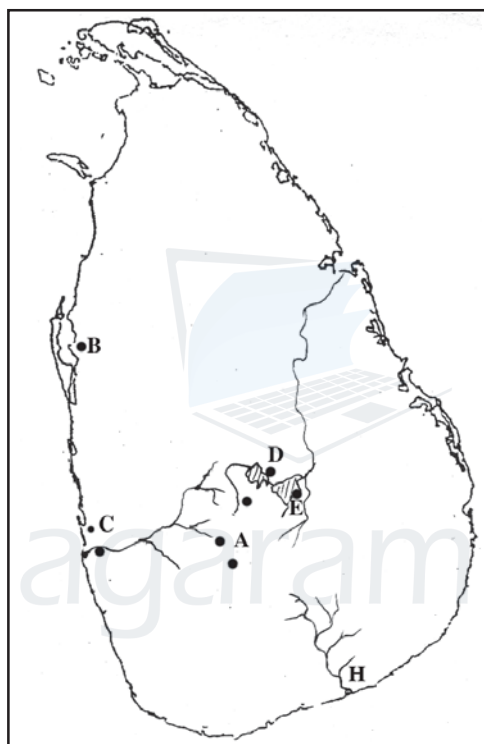
* Study the given map of the world to answer question no. 2 and 3.



- (02) (i) Name the climatic zones shown by letters A and B in the above map. (2 marks)
- (ii) (a) Name the forest shown by no. 1 and the desert shown by no.2 belong to the climatic zone 'A' (3 marks)
- (b) Write the latitudinal location that is spread the climate zone 'B' (3 marks)
- (iii) (a) Name 2 specific features of the climate shown by letter 'C' (5 marks)
- (b) Explain 2 facts that affect the climate towards human activities. (5 marks)
- (03) (i) Name the paddy cultivated country shown by letter P and the wheat cultivated country shown by letter R. (2 marks)
- (ii) (a) Name the types of soil that are suitable for wheat and paddy cultivation respectively. (3 marks)
- (b) Write 2 specific features between the Asia and the countries in the Asia and the countries outside Asia (3 marks)
- (iii) (a) Write 3 new technological methods that are used for paddy cultivation at present. (5 marks)
- (b) Explain a reason for "wheat is popular food among world people." (5 marks)

- (04) (i) (a) What was the pioneer country for Automobile industry in the world in 1950?
 (b) What was the pioneer country for Automobile industry in the world in 2012? (2 marks)
- (ii) Write 3 new trends regarding the auto mobile industry. (3 marks)
- (iii) (a) Where does the micro Auto mobile industry in Sri Lanka locate?
 (b) Name an area that produce boats in Sri lanka.
 (c) Name a country that buy boats of Sri Lanka.
 (d) Write 2 tricks that the automobile produced countries use to win the market at present (5 marks)

(05) Study the given map of Sri Lanka and answer questions.



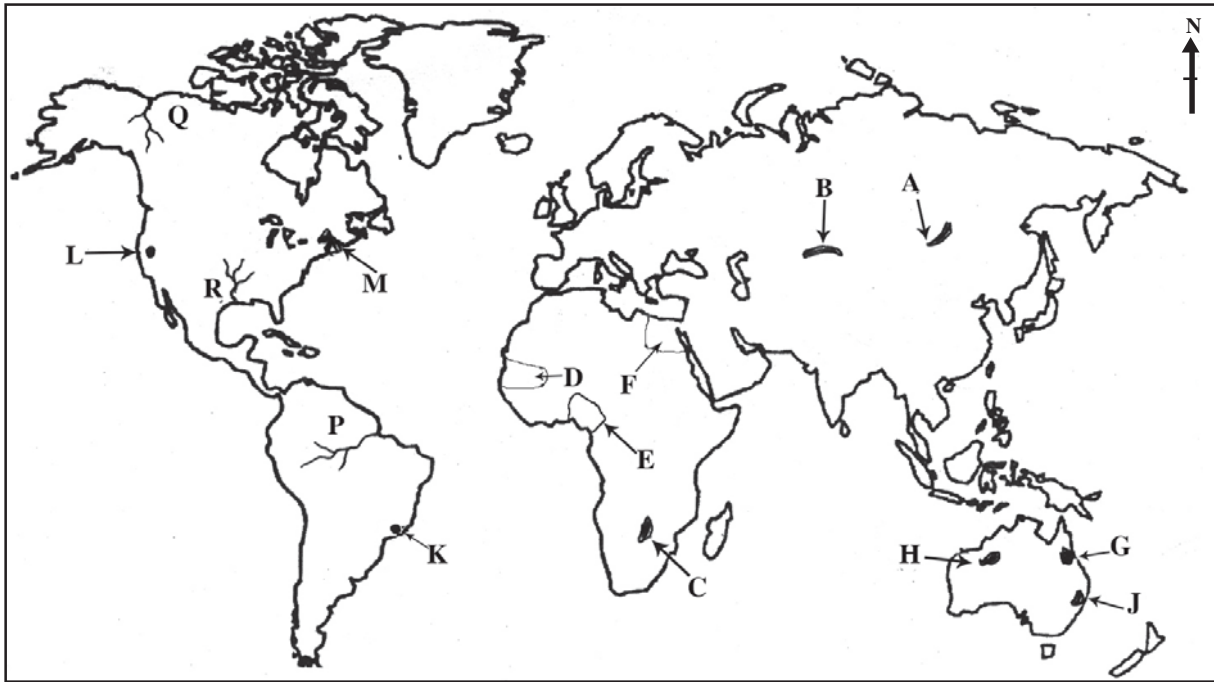
- (i) (a) Name the sources of energy that Sri Lanka is mostly used.
 (b) Name an environmental friendly source of energy. (2 marks)
- (ii) Name the hydro power station shown by letter A.
 Name the wind power station shown by letter B.
 Name the thermo power station shown by letter C. (3 marks)
- (iii) (a) Name the river shown by letter H.
 (b) Write 2 problems arisen when using energy resources.
 (c) Explain a fact that the importance of conservation of energy sources. (5 marks)

- (06) (i) Name 2 renewable resources (2 marks)
- (ii) (a) Name the type of rocks of followings
1. Granite 2. Limestone
- (b) Name a non metal mineral (3 marks)
- (iii) (a) Write 2 facts that are affected to create soil.
- (b) Write 2 steps that can be taken to conserve soil and explain one of the (5 marks)

- (07) (i) Write an old indicator and a modern indicator to measure the development of a country. (2 marks)
- (ii) What are the 3 main indicators used in measuring human development indicator. (3 marks)
- (iii) (a) Write 2 development projects that are launched for reducing the gap between the village and the town in Sri Lanka.
- (b) Write 2 advantage by improving the information communication facilities at present and explain one of them. (5 marks)

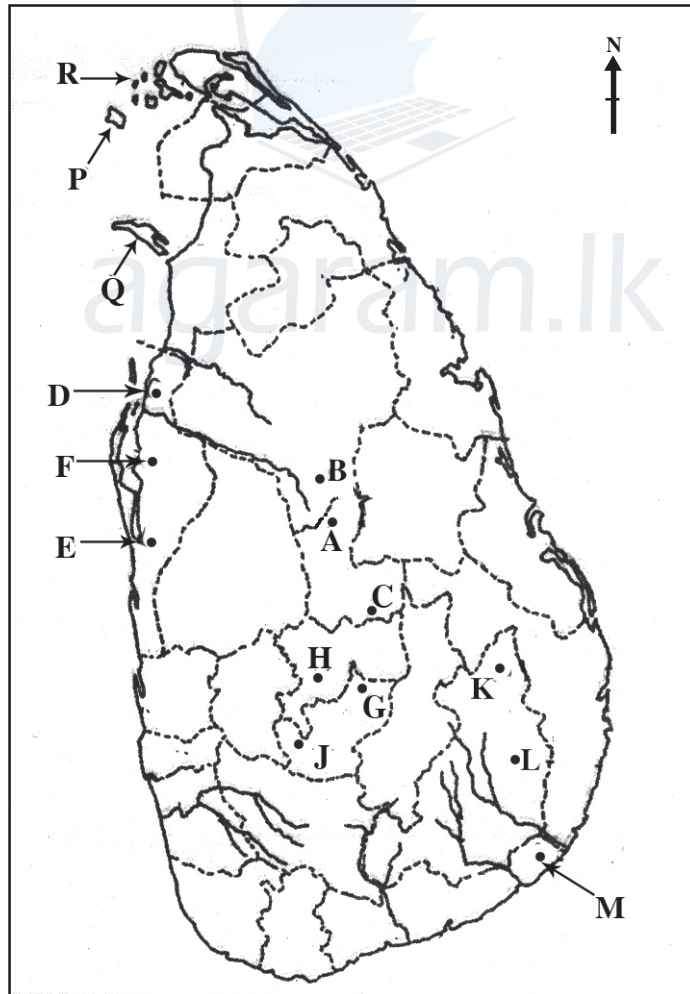
- (08) (i) Write the two provinces that have the least and the highest population in Sri Lanka. (2 marks)
- (ii) Explain the term 'Population aging' write 2 harmful effects of population aging that are faced by Sri Lankans. (3 marks)
- (iii) (a) Write 2 districts that over come the population than million in Sri Lanka.
- (b) Write 2 problems arisen due to the increase of population and explain one of them. (5 marks)

(අ) / (ஆ) / (b)



- (i)
- (ii)
- (iii)
- (iv)
- (v)

(ආ) / (ඇ) / (c)



- (i)
- (ii)
- (iii)
- (iv)
- (v)

(1) (අ) (a) $\frac{10}{10}$

(ආ) (ஆ) (b) $\frac{5}{5}$

(ඈ) (இ) (c)

$\frac{5}{5} = \frac{20}{20}$



වයඹ පළාත අධ්‍යාපන දෙපාර්තමේන්තුව
Provincial Department of Education - NWP

61 S II

දෙවන වාර පරීක්ෂණය - 11 ශ්‍රේණිය - 2019
Second Term Test - Grade 11 - 2019

නම / විභාග අංකය : GEOGRAPHY - II භූගෝල විද්‍යාව - II



Agaram.LK - Keep your dreams alive!

Agaram.LK - Keep your dreams alive!

- (03) (i) P - Thailand
R - Arijantina (2 marks)

- (ii) (a) Wheat cultivation - chernozom soil
paddy cultivation - Alluvial soil
- (b) Asian countries -
staple food is rice, consumption of pepole who live in produced areas, labour intensive crop.
- Countries out side Asia -
Cultivate in large farmlands, commercial basis, increase the use of machines (5 marks)

- (iii) (a) Introduction of seed that produces a short term yield with resistance to various types of diseases using gene technology.

Production of rice that contains specific qualities eg - Golden rice

Using new teachniques for manufacturing and packing rice related products

eg - rice flour bread biscuits

- (b) Consumption of various type of food items prepared with wheat
familiar products to every one
easy to produce various food items.
fact - 1 marks
discription - 1 marks

(3 marks)
(10 marks)

- (04) (i) (a) United states of America
(b) China (2 marks)
- (ii) Expansion as an assembling industry.

Production rights very offen belong to multi National Corporations.

Use of modern technological skills
Produce eco - friendly vehicles (3 marks)

- (iii) (a) Polgahawela
(b) Kaluthara, Negambo, Beruwala, Mirissa, Panadura, Korlawella
(c) India, Maldives, Singappore, Norway, South korea.
(d) Use new technological skills, design attractively,
produce varrous production, concern about the price (5 marks)

(10 marks)

- (05) (i) (a) Bio mass
(b) solar power, winds (2 marks)

- (ii) A - Laxapana,
B - Puttalam,
C - Kerawalapitiya (3 marks)

- (iii) (a) Walawe river
(b) high expenditure, damages through natural hazards, decides on environmental factors.
(c) Can save foreign exchange contribute to the development of the country, save time. (5 marks)

(10 marks)

- (06) (i) Forests, soil, wild life, fish (2 marks)
(ii) (a) Granite - Igneous
Limestone - sedimentary
(b) Graphite, sand, limestone, pospate (3 marks)

- (iii) (a) Parent rock, relief, climate, time
(b) replanting forests, grow environmental friendly crops, etc
(page 23)
(5 marks)
(10 marks)
- (07) (i) **old indicators**
Gross National product
Per capita income
Modern indicators
Physical quality of life index
Human Development index
Human poverty index
Human pressure Index
(2 marks)
- (ii) life expectancy at birth literacy
Purchasing power parity tallied with the per capita gross national product
(3 marks)
- (iii) (a) Village - Divineguma, Gemidiriya, Janasaviya, Samudri etc.
(b) Town - beautify the town, expand the roads, build new complex, garbage management programme
(5 marks)
- (08) (i) highest - western province
least - Northern province (2 marks)
(ii) When the population of people over 59 years of age in a country or region rises due to increased life expectancy and declining birth rate is called the population ageing.
decrease the labour force, increase the adult dependant, necessity of medicine and look after, less participation of production.
(3 marks)
- (iii) (a) Colombo, Gampaha, Kurunegala, Kandy, Kaluthara, Rathnapura, Galle
(b) lack of food, lack of houses collect garbage, environment pollution slumps etc.
(5 marks)
(10 marks)

