



Grade 7

Mathematics

1 ½ hours

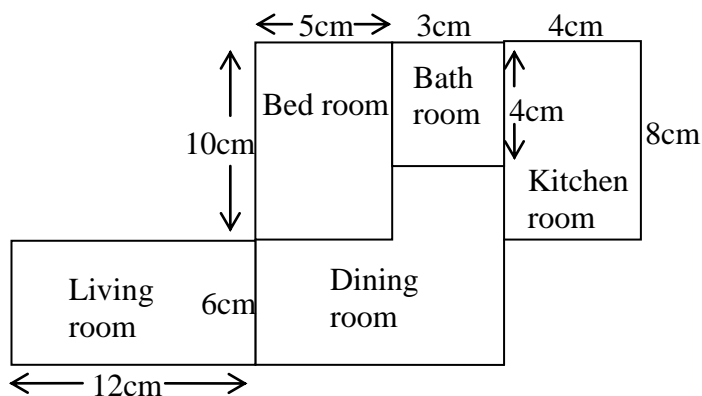
### 27 - Scale Diagrams

#### Part I

- (1) Express the scales as a ratio.
  - i) Representing 50 cm by 1cm.
  - ii) Representing 1 mm by 5cm.
- (2) The side length of a square shaped land is 30m. Draw a scale diagram, using a suitable scale.
- (3) In a map drawn to the scale 1 : 1000
  - i) Find the actual length represented by 2cm.
  - ii) Find the actual length represented by 8cm.
  - iii) What length in the map represents an actual length of 10m.

#### Part II

- (1) The length of a rectangular land is 50m and the width is 25m.
  - i) Select a suitable scale to draw the scale diagram of the land.
  - ii) Draw the scale diagram of the land.
- (2) In a map drawn to scale 1 : 50 000,
  - i) What is the actual distance indicated by a distance of 5cm.
  - ii) What length in the map represents a distance of 2 km.
  - iii) If the distance from maharagama to nugegoda is 10 km, what is the distance between the two cities in the map?
- (3) The floor plan of a house is shown in the figure. The scale is 1 : 200



- i) Find the actual length of kitchen,
- ii) Find the actual length of living room,
- iii) Find the actual width of dining room,
- iv) Find the area of bed room,
- v) Find the area of dining room,
- vi) Find the perimeter of given plan.
- vii) It is proposed to lay tiles in the living room. Estimate the number of square tiles of side length 50cm required for this purpose.



agaram.lk