



Continuity of Life

- 01) Plants that are referred to as monoecious are,
 i) those that bear female & male flower
 ii) those that bear female flowers
 iii) those that bear male flowers
 iv) those that bear bisexual flower
- 02) Which of the followings are essential factors for seed germination
 i) Air & Light
 ii) Moisture & Light
 iii) Moisture and Air
 iv) Light & Viability of seeds
- 03) Few characters of flowers are given below
 A. having a colorful corolla
 B. having light pollen grains
 C. having branched stigma
 D. having sticky stigma

Which of the above characters belongs to a wind pollinated flower?

- i) A & B only
 ii) A & C only
 iii) A, B & C only
 iv) B, C & D only
- 04) The diagrams below, represent several fruits and seeds, with adaptation for dispersal by different methods. Which of the following indicates the mode of dispersal in the correct sequence?



A



B



C



D

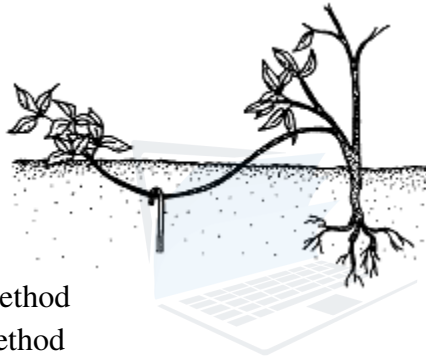
- i) Animal, wind, water, water
 ii) Wind, wind, water, animals
 iii) Wind, water, water, animals
 iv) Animals, wind, water, animals
- 05) Which of the following is not an essential factor for seed germination
 i) Moisture
 ii) Air
 iii) Light
 (iv) Viability of seeds
- 06) Which plant propagate most commonly through clones in Sri Lanka.
 i) Tea
 ii) Rubber
 iii) Orchid
 iv) Coconut

- 07) 'Placenta' is a,
- The cord that connects the embryo to mother
 - The pouch that covers the embryo
 - The place where the materials move between mother & embryo
 - The area where the mother's blood vessels connect with embryo

- 08) Some features of a flower of a plant are given below
- Flowers are found at the apex of the plant
 - Large amount of pollens are produced
 - Pollen are very small & light

The agent of pollination of the flower which posses the above mentioned feature is

- Animal
 - Wind
 - Water
 - Explosive mechanism
- 09) Given below is a diagram of a Jasmin plant. This propagation method is?



- Ground layering method
 - Aerials layering method
 - Propagation by runners
 - Bud grafting
- 10) The hormone stimulated the proliferation phase of the uterus is,
- Follicular stimulating hormone
 - Lutenising hormone
 - Oestrogen
 - Progesterone

Structured essay

01) A. Reproduction is an important life process for the continuity of species of living organisms.

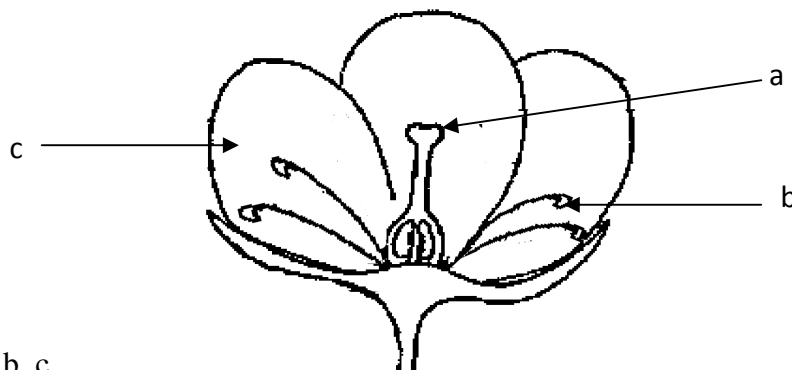
- i) What are the two types of reproduction?
.....
- ii) Write 2 differences between the two types of reproduction you mentioned in (i) above.
.....
- iii) What are the male & female gametes of human
.....
- iv) Where do the male & female gametes form?
.....
- v) How often does a release of a female gametes takes place?
.....
- vi) What is the hormone responsible for the release of female gametes?
.....
- vii) What is meant by fertilization ?
.....

B. It is important to have a knowledge about sexually transmitted diseases (STD) in order to avoid from these disease.

- i) What do you mean by a sexually transmitted disease?
.....
- ii) Name a sexually transmitted disease caused by
 - a) Bacteria -.....
 - b) Virus -.....
- iii) Mention two other ways of contacting a sexually transmitted viral disease other than by sexual contact.
.....

Essay

02)A. Group of grade 10 students got an opportunity to observe some flowers



- i) Name a, b, c
- ii) Out of the two types of pollination, to which type is this flower adapted?
- iii) State an adaptation found in this flower to carry out the type of pollination mentioned by you in question number (ii)
- iv) Based on the structure of this flower which pollination agent contributes for its pollination?

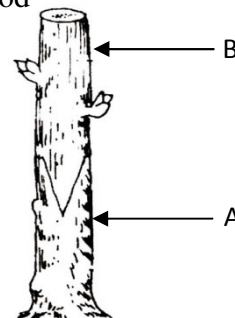
Agaram.LK - Keep your dreams alive!

Agaram.LK - Keep your dreams alive!

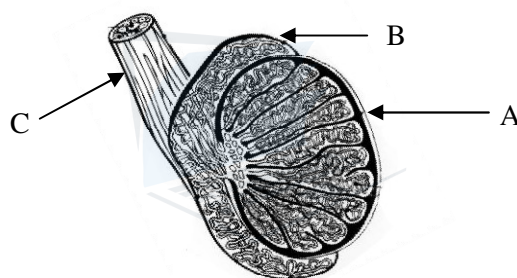
- B. Tissue culture is an example for artificial vegetative propagation of plants in which vegetative parts are used
- What are the most common 2 parts used for tissue culture?
 - Write one of the constituents present in a tissue culture medium
 - What is called a callus?
 - What is the substance that use to initiate rootings from the callus?
 - State two advantages of tissue culture?

C. Following diagram shows another artificial vegetative propagation method

- What is called as an artificial vegetative propagation method?
- What is this method of artificial vegetative propagation method?
- Name A & B
- Write two properties of A and B plant parts
- Write two disadvantages of above vegetative propagation method

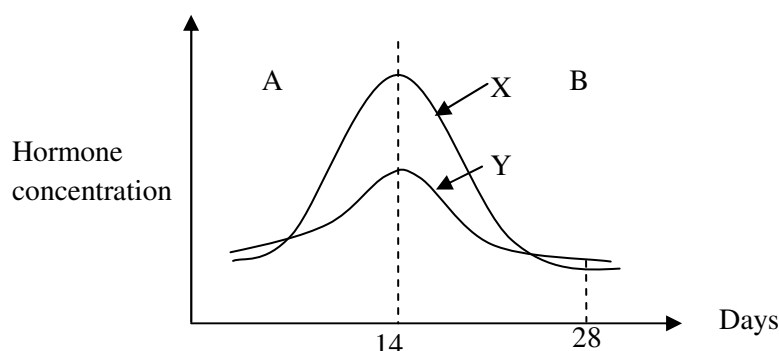


03.A) Reproduction is important in continuity of life. This is a part of the male reproductive system.



- Name B & C
- What are the structures that can find inside A which helps in production of male gametes?
- What is the hormone responsible for the above process mentioned in (ii) above
- What is the reason for testes to be in a sac called scrotum.
- Draw a diagram and name the parts of a sperm

B) Following is a diagram relevant to the hormonal changes occur in the ovary during the menstrual cycle of female



- Name A & B stages in ovary?
- What is the hormone responsible for the consequences happen in the ovaries during phase A?
- In the above graph what is the incident happening on 14th day
- What is process stimulate by the hormone?