



Grade 8

Science

Unit: 9 - Human Organ
Systems

• **Underline the most suitable answer.**

(1) Kidneys of human located at

- 1) Abdominal cavity 2) Near to the heart
 3) Thoracic cavity 4) Pelvic cavity

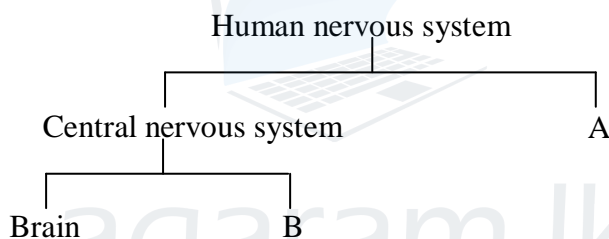
(2) This is not a main part of urinary system of human.

- 1) Bladder 2) Ureter 3) Aorta 4) Urethra

(3) This is not an excretory product

- 1) Sweat 2) Faeces 3) Exhaled 4) Urine

(4)



In the above diagram, 'A' denotes

- 1) Spinal nerves 2) Spinal cord
 3) Peripheral nervous system 4) Vertebral column

(5) The structure denoted by 'B' in the above chart is,

- 1) Brain 2) Spinal cord 3) Cranial nerves 4) Spinal nerves

(6) The number of pairs of spinal nerves in human is,

- 1) 10 2) 8 3) 12 4) 24

(7) The largest organ of human is

- 1) Heart 2) Lungs 3) Skin 4) Liver

(8) Sweat of human is produced by

- 1) Sebaceous gland 2) Hair erector muscle
 3) Hair follicle 4) Sweat gland

- (9) Melanin pigment is produced in
- | | |
|------------------|--------------------|
| 1) Nerve endings | 2) Epidermis |
| 3) Dermis | 4) Sebaceous gland |
- (10) This is not a function of the human skin
- 1) Production of urine
 - 2) Excretion
 - 3) Synthesis of vitamin D
 - 4) Regulation of body temperature

Part II

- **Answer all questions**

- (1) Fill in the blanks using suitable words.

- I. is the protective layer of the body.
- II. Two layers of skin are..... and
- III. There are pairs of cranial nerves.
- IV. Both the brain and the cord are protected by layers of special tissues called the
- V. Two types of coordination are and
- VI. Two major parts of a human kidney are and
- VII. The main nitrogenous product of human kidney is
- VIII. In an adult each kidney is about cm long and cm wide.
- IX. An excretory product which is produced by lungs is

- (2) Match the correct answer.

| A | B |
|-------------------------|--|
| i) Spinal cord | Absorbing shocks |
| ii) Cerebrum | Balancing the body |
| iii) Medulla oblongata | Controlling the breathing |
| iv) Cerebellum | Transmitting messages between body and brain |
| v) Cerebra spinal fluid | Controlling voluntary actions |

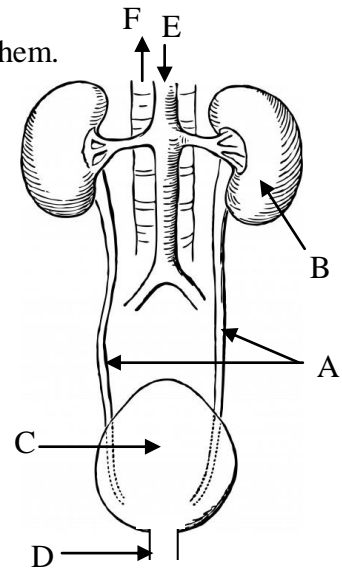
(3) Give short answer

- i) What do you mean by excretion?
- ii) Name the receptors and effectors.
- iii) Name 3 components of urine
- iv) What is the function of the bladder?
- v) What is the shape of renal pyramids of human kidney?
- vi) Name 3 parts of the human brain.
- vii) Write 2 functions of peripheral nervous system.

(4) Essay questions.

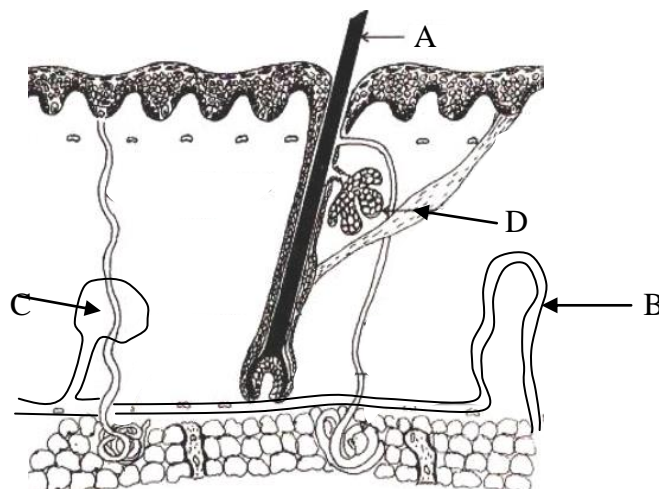
i) Name 2 diseases relate to kidney and explain one out of them.

- ii)
 - a) Name A, B, C and D parts of this system.
 - b) What is the function of E?
 - c) What is the reason of locating the right kidney little bit lower than the left kidney?
 - d) Write 2 things that you can do to maintain healthy kidneys
 - e) Name the part which is dark in colour in 'B'



iii) Write 4 protective measures that can be taken to keep the nervous system healthy.

iv) The structure of the human skin is given here.



- a) Name A, B, C and D parts of the above diagram.
- b) Write the function of B.